





# U.S. Missiles Tests Held 50% Successful

(Continued from Page One)

of information, has let the world know of her successes in the missile-satellite field. She claimed a successful test of an ICBM and fired her Sputnik for all the world to see.

If Russia, like the United States, also encountered failures and frustrations in attaining those successes, Moscow has taken care that there should be no mention of the fact.

The United States says there is no direct connection between the country's Earth satellite and missile programs, even though both may be launched by rockets which seem much alike. But in this scientific field the scope is somewhat the same as in missile tests.

The Navy, in charge of the Vanguard Earth satellite program, has conducted two highly preliminary test firings of component rocket engines. Both are described officially as successful. But mounting charges of delay in the Vanguard program are being made in the wake of Russia's spectacular success.

The best that the United States can offer is that a full-scale firing of all three of the rocket engines will be held in December.

Between now and then, the Navy hopes to conduct another of the progressive tests. This one will involve firing of the main rocket engine, with 27,000 pounds thrust, sending aloft a vehicle which will have the external appearance of a complete Vanguard rocket, but in which the second and third stage engines are dummy equipment.

That test device has been at Cape Canaveral for about three months. The Navy from time to time hints that a firing may come within the next few days.

Missile tests have dragged the rocket program even outside the Cape Canaveral missile and satellite projects.

Yesterday, the Air Force admitted that it has been unsuccessful in four attempts to fire a research rocket up to 4,000 miles in the air. The rocket was to be launched from a balloon floating 100,000 feet over Eniwetok atoll, in the central Pacific.

This time, the rocket isn't named. The Air Force says "unfavorable atmospheric conditions kept the balloons from getting into the desired positions. In two instances, the rockets were fired with the hope of obtaining at least some data even though the balloons weren't up to intended height. Two rockets remain and the Air Force will try again.

# Directs Cadillac



William H. Stueck

# Coventry Special Town Meeting Set On Tax Collector's Salary

Coventry, Oct. 17 (Special) — The new Board of Finance has requested a special town meeting be held to act on placing the position of tax collector on a \$4,000 yearly salary base, exclusive of fees and expenses.

This question was originally included in the warrant for the annual town meeting Oct. 7 and which was adjourned for two weeks.

The special meeting will be held at 7:30 p.m. Monday in the Robertson School when the Board will read its recommendations for the status change in the position, prior to action on the measure, according to William B. Hotchkiss, secretary.

The position has been on a commission basis.

John M. Strop Jr. was elected finance board a few days ago.

Monday Meetings Set

Town voters are slated for two more meetings Monday at the Robertson School.

Starting as an undergraduate of the Amherst Managers he studied with Curt Canfield now head of the Yale School of Drama, under Francis Cleveland, at New Britain, and then at the Board of Selectmen and the town treasurer's office.

The menu will include roast beef, mashed potatoes, squash, green beans, pickles, rolls, coffee, milk and apple pie.

Co-hostess will be Mrs. A. Harry W. Olsen and Mrs. Josephine Meyer. Mrs. Robert Kingsbury will be in charge of the kitchen and Mrs. Walter B. Pomeroy, of the ticket.

Mr. Stueck was elected director for the Pennamoc Players at Mansfield, N. Y., and the Westchester County Players at White Plains.

His radio experience, acting, directing, producing—covers more than twenty years, including one year at WTRF. He has helped produce some 200 radio plays, and has been professional producer since then.

His last assignment in this field being in 1955.

Director for the play may be obtained at Weldon Drug Co. from any member of the Trustees, or at the door.

NO COINS

Although he was the wealthiest man of his time, King Solomon didn't have a cent in his name. Coinage money had not appeared in Palestine during his reign in the 10th century B.C.

Washington's Apparel

At the first inauguration George Washington appeared in a brown suit made of cloth manufactured at Hartford, Conn. He wore a side sword and his hair well powdered.

# Services That Interpret The Wishes Of The Family

Services That Interpret The Wishes Of The Family

**JOHN B. BURKE FUNERAL HOME**

TEL. MI 3-8888

217 CANAL STREET, MANCHESTER, CONN.

AMBULANCE SERVICE

You don't need to pay \$250 to \$300 for INCONSPICUOUS QUALITY HEARING AIDS

**ZENITH**

Start the world's largest-selling, finest-quality hearing aids—light, inconspicuous—\$45 to \$165! Engman and associates, 111-113 Main Street, New Haven, Conn. 06510.

**QUINN'S PHARMACY**

Phone MI 3-1116

111-113 MAIN STREET, NEW HAVEN, CONN.

It's FAIRWAY for buster brown socks

Insulate your attic for \$50\* plus a few hours of your spare time

REYNOLDS DO-IT-YOURSELF INSULATION

Makes your home cooler in summer—warmer in winter

Save money by doing the job yourself. Simply unroll, measure, cut with shears, fasten with staple gun or tack hammer. Complete instructions furnished.

• Repels up to 95% of radiant heat

• A perfect vapor barrier

• Cleans, odorless

Let us help you estimate your needs

**MANCHESTER LUMBER, INC.**

255 CENTER ST. MANCHESTER

Whodda-ya know?

Everything, Mo!

I've just come back from the PRODUCTS SHOW!

BLANK OFFER 875 MAIN STREET NORTH BRANCH 38 NORTH MAIN STREET MANCHESTER, CONN.

PRODUCTS SHOW OCT. 16, 17, 18, 19

At "The Trust Co." booth...

• ANTIQUE COIN BANK DISPLAY

• NEW WALL SAFE COIN BANK

• MODERN BANKING MACHINES IN OPERATION

**THE MANCHESTER TRUST CO.**

Member FDIC

The MAGIC MIRROR BEAUTY STUDIO, Inc.

525 MAIN ST.—ACROSS FROM CENTER PARK

MI 3-7484

Fall Special PERMANENT WAVE \$10.00

Complete with haircut, restyling and cream rinse

Ask for any one of our seven hair stylists. No appointment necessary. Just walk in.

**MR. ARMAND**  
Hair stylist from one of Manchester's leading Beauty Shops.

**MISS ANN**  
A permanent member of our staff with years of valuable experience.

**MISS CHRIS**  
Specializing in hair coloring.

**MISS CAROL**  
From one of Hartford's leading Beauty Shops.

**MR. RAYMOND**  
MANAGER

**MISS AMELIA**  
Specializing in hair coloring and manicuring.

**MR. BILL**  
Stylist—from one of Hartford's leading Department Stores

**STORE HOURS:**  
Tuesday through Saturday 9 A.M. to 6 P.M.  
Thursday 9 A.M. to 5 P.M.

NO Vote NO Vote NO Vote NO Vote NO

TAKE A SENSIBLE LOOK AT THE

**COUNTRY CLUB LEASE**

NO Vote TOO LONG-- A 30-YEAR LEASE ties up valuable town property too long. Would you sign away your property for 30 years at TODAY'S prices?

NO Vote TOO LITTLE-- \$7,000 A YEAR for the use of desirable land will FREEZE the town's income no matter what we might want to do with it in 10 or 20 years.

NO Vote NO HONEST EFFORT WAS MADE to study this situation in order to find out what would be best for Manchester. LET'S TAKE OUR TIME to find the best solution for BOTH the Country Club and the town.

NO Vote NO HASTY ACTION SHOULD BE TAKEN which would penalize either the Country Club or the town.

NO Vote NO Vote NO Vote NO Vote NO

**TUESDAY, OCTOBER 22**

**8 a. m. to 8 p. m.**

NO Vote NO Vote NO Vote NO Vote NO

# NORMAN'S BARGAIN SPECTACULAR

## Celebrating The Opening of Our Newly Enlarged Gas Appliance Dept.

# America's Finest, Quality Built Throughout, Selected Features, Modern Styled GAS RANGES

All new from top to bottom, the outstanding new Caloric Ranges are the most exciting in more than half a century of Caloric progress. These sensational ranges represent a revolutionary new concept, maximum cooking capacity in minimum overall dimensions. Here's new flexibility. In three new basic sizes, 24", 36" and 40", the new Caloric Ranges provide an almost infinite variety of combinations. The housewife can choose an oven to suit her needs... either 13" "pastry" oven, 16" full-size oven, or 20" "harvest" oven. She can have a double oven range or a high-level broiler with rotisserie. She can have automatic oven and broiler-lighting, automatic oven controls, four burners or six, divided or cluster top burner arrangement. Here's the new look in ranges. With new background, new angled control panel, freshly styled door panels, the new Caloric Ranges have a distinctive and unusual profile. These sensational ranges... the brilliant years ahead styling of Peter Muller-Monk... the great new features... the sturdy long-lived construction... all these add up to one thing: You're years ahead with the new CALORIC ULTRAMATIC.

**Caloric NEW MATCHLESS 24" GAS RANGE**

Buy It At Norman's For As Little As **\$2.20** WEEKLY

**Caloric NEW MATCHLESS 36" GAS RANGE**

Buy It At Norman's For As Little As **\$1.80** WEEKLY

**Caloric NEW MATCHLESS 40" WITH HI BROILER GAS RANGE**

Buy It At Norman's For As Little As **\$3.30** WEEKLY

**Caloric NEW MATCHLESS 36" KITCHEN-HEATER GAS RANGE**

Buy It At Norman's For As Little As **\$2.05** WEEKLY

**Caloric NEW MATCHLESS 40" WITH HI BROILER GAS RANGE**

Buy It At Norman's For As Little As **\$3.30** WEEKLY

**Caloric NEW MATCHLESS 36" KITCHEN-HEATER GAS RANGE**

Buy It At Norman's For As Little As **\$2.05** WEEKLY

**Caloric NEW MATCHLESS 40" WITH HI BROILER GAS RANGE**

Buy It At Norman's For As Little As **\$3.30** WEEKLY

**Caloric NEW MATCHLESS 36" KITCHEN-HEATER GAS RANGE**

Buy It At Norman's For As Little As **\$2.05** WEEKLY

**Caloric NEW MATCHLESS 40" WITH HI BROILER GAS RANGE**

Buy It At Norman's For As Little As **\$3.30** WEEKLY

**Caloric NEW MATCHLESS 36" KITCHEN-HEATER GAS RANGE**

Buy It At Norman's For As Little As **\$2.05** WEEKLY

**Caloric NEW MATCHLESS 40" WITH HI BROILER GAS RANGE**

Buy It At Norman's For As Little As **\$3.30** WEEKLY

**Caloric NEW MATCHLESS 36" KITCHEN-HEATER GAS RANGE**

Buy It At Norman's For As Little As **\$2.05** WEEKLY

**Caloric NEW MATCHLESS 40" WITH HI BROILER GAS RANGE**

Buy It At Norman's For As Little As **\$3.30** WEEKLY

**Caloric NEW MATCHLESS 36" KITCHEN-HEATER GAS RANGE**

Buy It At Norman's For As Little As **\$2.05** WEEKLY

**Caloric NEW MATCHLESS 40" WITH HI BROILER GAS RANGE**

Buy It At Norman's For As Little As **\$3.30** WEEKLY

**Caloric NEW MATCHLESS 36" KITCHEN-HEATER GAS RANGE**

Buy It At Norman's For As Little As **\$2.05** WEEKLY

**Caloric NEW MATCHLESS 40" WITH HI BROILER GAS RANGE**

Buy It At Norman's For As Little As **\$3.30** WEEKLY

**Caloric NEW MATCHLESS 36" KITCHEN-HEATER GAS RANGE**

Buy It At Norman's For As Little As **\$2.05** WEEKLY

**Caloric NEW MATCHLESS 40" WITH HI BROILER GAS RANGE**

Buy It At Norman's For As Little As **\$3.30** WEEKLY

**Caloric NEW MATCHLESS 36" KITCHEN-HEATER GAS RANGE**

Buy It At Norman's For As Little As **\$2.05** WEEKLY

**Caloric NEW MATCHLESS 40" WITH HI BROILER GAS RANGE**

Buy It At Norman's For As Little As **\$3.30** WEEKLY

**Caloric NEW MATCHLESS 36" KITCHEN-HEATER GAS RANGE**

Buy It At Norman's For As Little As **\$2.05** WEEKLY

**Caloric NEW MATCHLESS 40" WITH HI BROILER GAS RANGE**

Buy It At Norman's For As Little As **\$3.30** WEEKLY

**Caloric NEW MATCHLESS 36" KITCHEN-HEATER GAS RANGE**

Buy It At Norman's For As Little As **\$2.05** WEEKLY

**Caloric NEW MATCHLESS 40" WITH HI BROILER GAS RANGE**

Buy It At Norman's For As Little As **\$3.30** WEEKLY

**Caloric NEW MATCHLESS 36" KITCHEN-HEATER GAS RANGE**

Buy It At Norman's For As Little As **\$2.05** WEEKLY

**Caloric NEW MATCHLESS 40" WITH HI BROILER GAS RANGE**

Buy It At Norman's For As Little As **\$3.30** WEEKLY

**Caloric NEW MATCHLESS 36" KITCHEN-HEATER GAS RANGE**

Buy It At Norman's For As Little As **\$2.05** WEEKLY

**Caloric NEW MATCHLESS 40" WITH HI BROILER GAS RANGE**

Buy It At Norman's For As Little As **\$3.30** WEEKLY

**Caloric NEW MATCHLESS 36" KITCHEN-HEATER GAS RANGE**

Buy It At Norman's For As Little As **\$2.05** WEEKLY

**Caloric NEW MATCHLESS 40" WITH HI BROILER GAS RANGE**

Buy It At Norman's For As Little As **\$3.30** WEEKLY

**Caloric NEW MATCHLESS 36" KITCHEN-HEATER GAS RANGE**

Buy It At Norman's For As Little As **\$2.05** WEEKLY

**Caloric NEW MATCHLESS 40" WITH HI BROILER GAS RANGE**

Buy It At Norman's For As Little As **\$3.30** WEEKLY

**Caloric NEW MATCHLESS 36" KITCHEN-HEATER GAS RANGE**

Buy It At Norman's For As Little As **\$2.05** WEEKLY

**Caloric NEW MATCHLESS 40" WITH HI BROILER GAS RANGE**

Buy It At Norman's For As Little As **\$3.30** WEEKLY

**Caloric NEW MATCHLESS 36" KITCHEN-HEATER GAS RANGE**

Buy It At Norman's For As Little As **\$2.05** WEEKLY

**Caloric NEW MATCHLESS 40" WITH HI BROILER GAS RANGE**

Buy It At Norman's For As Little As **\$3.30** WEEKLY

**Caloric NEW MATCHLESS 36" KITCHEN-HEATER GAS RANGE**

Buy It At Norman's For As Little As **\$2.05** WEEKLY

**Caloric NEW MATCHLESS 40" WITH HI BROILER GAS RANGE**

Buy It At Norman's For As Little As **\$3.30** WEEKLY

**Caloric NEW MATCHLESS 36" KITCHEN-HEATER GAS RANGE**

Buy It At Norman's For As Little As **\$2.05** WEEKLY

**Caloric NEW MATCHLESS 40" WITH HI BROILER GAS RANGE**

Buy It At Norman's For As Little As **\$3.30** WEEKLY

**Caloric NEW MATCHLESS 36" KITCHEN-HEATER GAS RANGE**

Buy It At Norman's For As Little As **\$2.05** WEEKLY

**Caloric NEW MATCHLESS 40" WITH HI BROILER GAS RANGE**

Buy It At Norman's For As Little As **\$3.30** WEEKLY

**Caloric NEW MATCHLESS 36" KITCHEN-HEATER GAS RANGE**

Buy It At Norman's For As Little As **\$2.05** WEEKLY

**Caloric NEW MATCHLESS 40" WITH HI BROILER GAS RANGE**

Buy It At Norman's For As Little As **\$3.30** WEEKLY

**Caloric NEW MATCHLESS 36" KITCHEN-HEATER GAS RANGE**

Buy It At Norman's For As Little As **\$2.05** WEEKLY

**Caloric NEW MATCHLESS 40" WITH HI BROILER GAS RANGE**

Buy It At Norman's For As Little As **\$3.30** WEEKLY

**Caloric NEW MATCHLESS 36" KITCHEN-HEATER GAS RANGE**

Buy It At Norman's For As Little As **\$2.05** WEEKLY

**Caloric NEW MATCHLESS 40" WITH HI BROILER GAS RANGE**

Buy It At Norman's For As Little As **\$3.30** WEEKLY

**Caloric NEW MATCHLESS 36" KITCHEN-HEATER GAS RANGE**

Buy It At Norman's For As Little As **\$2.05** WEEKLY

**Caloric NEW MATCHLESS 40" WITH HI BROILER GAS RANGE**

Buy It At Norman's For As Little As **\$3.30** WEEKLY

**Caloric NEW MATCHLESS 36" KITCHEN-HEATER GAS RANGE**

Buy It At Norman's For As Little As **\$2.05** WEEKLY

**Caloric NEW MATCHLESS 40" WITH HI BROILER GAS RANGE**

Buy It At Norman's For As Little As **\$3.30** WEEKLY

**Caloric NEW MATCHLESS 36" KITCHEN-HEATER GAS RANGE**

Buy It At Norman's For As Little As **\$2.05** WEEKLY

**Caloric NEW MATCHLESS 40" WITH HI BROILER GAS RANGE**

Buy It At Norman's For As Little As **\$3.30** WEEKLY

**Caloric NEW MATCHLESS 36" KITCHEN-HEATER GAS RANGE**

Buy It At Norman's For As Little As **\$2.05** WEEKLY

**Caloric NEW MATCHLESS 40" WITH HI BROILER GAS RANGE**

Buy It At Norman's For As Little As **\$3.30** WEEKLY

**Caloric NEW MATCHLESS 36" KITCHEN-HEATER GAS RANGE**

Buy It At Norman's For As Little As **\$2.05** WEEKLY

**Caloric NEW MATCHLESS 40" WITH HI BROILER GAS RANGE**

Buy It At Norman's For As Little As **\$3.30** WEEKLY

**Caloric NEW MATCHLESS 36" KITCHEN-HEATER GAS RANGE**

Buy It At Norman's For As Little As **\$2.05** WEEKLY

**Caloric NEW MATCHLESS 40" WITH HI BROILER GAS RANGE**

Buy It At Norman's For As Little As **\$3.30** WEEKLY

**Caloric NEW MATCHLESS 36" KITCHEN-HEATER GAS RANGE**

Buy It At Norman's For As Little As **\$2.05** WEEKLY

**Caloric NEW MATCHLESS 40" WITH HI BROILER GAS RANGE**

Buy It At Norman's For As Little As **\$3.30** WEEKLY

**Caloric NEW MATCHLESS 36" KITCHEN-HEATER GAS RANGE**

Buy It At Norman's For As Little As **\$2.05** WEEKLY

**Caloric NEW MATCHLESS 40" WITH HI BROILER GAS RANGE**

Buy It At Norman's For As Little As **\$3.30** WEEKLY

**Caloric NEW MATCHLESS 36" KITCHEN-HEATER GAS RANGE**

Buy It At Norman's For As Little As **\$2.05** WEEKLY

**Caloric NEW MATCHLESS 40" WITH HI BROILER GAS RANGE**

Buy It At Norman's For As Little As **\$3.30** WEEKLY

**Caloric NEW MATCHLESS 36" KITCHEN-HEATER GAS RANGE**

Buy It At Norman's For As Little As **\$2.05** WEEKLY

**Caloric NEW MATCHLESS 40" WITH HI BROILER GAS RANGE**

Buy It At Norman's For As Little As **\$3.30** WEEKLY

**Caloric NEW MATCHLESS 36" KITCHEN-HEATER GAS RANGE**

Buy It At Norman's For As Little As **\$2.05** WEEKLY

**Caloric NEW MATCHLESS 40" WITH HI BROILER GAS RANGE**

Buy It At Norman's For As Little As **\$3.30** WEEKLY

**Caloric NEW MATCHLESS 36" KITCHEN-HEATER GAS RANGE**

Buy It At Norman's For As Little As **\$2.05** WEEKLY

**Caloric NEW MATCHLESS 40" WITH HI BROILER GAS RANGE**

Buy It At Norman's For As Little As **\$3.30** WEEKLY

**Caloric NEW MATCHLESS 36" KITCHEN-HEATER GAS RANGE**

Buy It At Norman's For As Little As **\$2.05** WEEKLY

**Caloric NEW MATCHLESS 40" WITH HI BROILER GAS RANGE**

Buy It At Norman's For As Little As **\$3.30** WEEKLY

**Caloric NEW MATCHLESS 36" KITCHEN-HEATER GAS RANGE**

Buy It At Norman's For As Little As **\$2.05** WEEKLY

**Caloric NEW MATCHLESS 40" WITH HI BROILER GAS RANGE**

Buy It At Norman's For As Little As **\$3.30** WEEKLY

**Caloric NEW MATCHLESS 36" KITCHEN-HEATER GAS RANGE**

Buy It At Norman's For As Little As **\$2.05** WEEKLY

**Caloric NEW MATCHLESS 40" WITH HI BROILER GAS RANGE**

Buy It At Norman's For As Little As **\$3.30** WEEKLY

**Caloric NEW MATCHLESS 36" KITCHEN-HEATER GAS RANGE**

Buy It At Norman's For As Little As **\$2.05** WEEKLY

**Caloric NEW MATCHLESS 40" WITH HI BROILER GAS RANGE**

Buy It At Norman's For As Little As **\$3.30** WEEKLY

**Caloric NEW MATCHLESS 36" KITCHEN-HEATER GAS RANGE**

Buy It At Norman's For As Little As **\$2.05** WEEKLY

**Caloric NEW MATCHLESS 40" WITH HI BROILER GAS RANGE**

Buy It At Norman's For As Little As **\$3.30** WEEKLY

**Caloric NEW MATCHLESS 36" KITCHEN-HEATER GAS RANGE**

Buy It At Norman's For As Little As **\$2.05** WEEKLY

**Caloric NEW MATCHLESS 40" WITH HI BROILER GAS RANGE**

Buy It At Norman's For As Little As **\$3.30** WEEKLY

**Caloric NEW MATCHLESS 36" KITCHEN-HEATER GAS RANGE**

Buy It At Norman's For As Little As **\$2.05** WEEKLY

**Caloric NEW MATCHLESS 40" WITH HI BROILER GAS RANGE**

Buy It At Norman's For As Little As **\$3.30** WEEKLY

**Caloric NEW MATCHLESS 36" KITCHEN-HEATER GAS RANGE**

Buy It At Norman's For As Little As **\$2.05** WEEKLY

**Caloric NEW MATCHLESS 40" WITH HI BROILER GAS RANGE**

Buy It At Norman's For As Little As **\$3.30** WEEKLY

**Caloric NEW MATCHLESS 36" KITCHEN-HEATER GAS RANGE**

Buy It At Norman's For As Little As **\$2.05** WEEKLY

**Caloric NEW MATCHLESS 40" WITH HI BROILER GAS RANGE**

Buy It At Norman's For As Little As **\$3.30** WEEKLY

**Caloric NEW MATCHLESS 36" KITCHEN-HEATER GAS RANGE**

Buy It At Norman's For As Little As **\$2.05** WEEKLY

**Caloric NEW MATCHLESS 40" WITH HI BROILER GAS RANGE**

Buy It At Norman's For As Little As **\$3.30** WEEKLY

**Caloric NEW MATCHLESS 36" KITCHEN-HEATER GAS RANGE**

Buy It At Norman's For As Little As **\$2.05** WEEKLY

**Caloric NEW MATCHLESS 40" WITH HI BROILER GAS RANGE**

Buy It At Norman's For As Little As **\$3.30** WEEKLY

**Caloric NEW MATCHLESS 36" KITCHEN-HEATER GAS RANGE**

Buy It At Norman's For As Little As **\$2.05** WEEKLY

**Caloric NEW MATCHLESS 40" WITH HI BROILER GAS RANGE**

Buy It At Norman's For As Little As **\$3.30** WEEKLY

**Caloric NEW MATCHLESS 36" KITCHEN-HEATER GAS RANGE**

Buy It At Norman's For As Little As **\$2.05** WEEKLY

**Caloric NEW MATCHLESS 40" WITH HI BROILER GAS RANGE**

Buy It At Norman's For As Little As **\$3.30** WEEKLY

**Caloric NEW MATCHLESS 36" KITCHEN-HEATER GAS RANGE**

Buy It At Norman's For As Little As **\$2.05** WEEKLY

**Caloric NEW MATCHLESS 40" WITH HI BROILER GAS RANGE**

Buy It At Norman's For As Little As **\$3.30** WEEKLY

**Caloric NEW MATCHLESS 36" KITCHEN-HEATER GAS RANGE**

Buy It At Norman's For As Little As **\$2.05** WEEKLY

**Caloric NEW MATCHLESS 40" WITH HI BROILER GAS RANGE**

Buy It At Norman's For As Little As **\$3.30** WEEKLY

**Caloric NEW MATCHLESS 36" KITCHEN-HEATER GAS RANGE**

Buy It At Norman's For As Little As **\$2.05** WEEKLY

**Caloric NEW MATCHLESS 40" WITH HI BROILER GAS RANGE**

Buy It At Norman's For As Little As **\$3.30** WEEKLY

**Caloric NEW MATCHLESS 36" KITCHEN-HEATER GAS RANGE**

Buy It At Norman's For As Little As **\$2.05** WEEKLY

**Caloric NEW MATCHLESS 40" WITH HI BROILER GAS RANGE**

Buy It At Norman's For As Little As **\$3.30** WEEKLY

**Caloric NEW MATCHLESS 36" KITCHEN-HEATER GAS RANGE**

Buy It At Norman's For As Little As **\$2.05** WEEKLY

**Caloric NEW MATCHLESS 40" WITH HI BROILER GAS RANGE**

Buy It At Norman's For As Little As **\$3.30** WEEKLY

**Caloric NEW MATCHLESS 36" KITCHEN-HEATER GAS RANGE**

Buy It At Norman's For As Little As **\$2.05** WEEKLY

**Caloric NEW MATCHLESS 40" WITH HI BROILER GAS RANGE**

Buy It At Norman's For As Little As **\$3.30** WEEKLY

**Caloric NEW MATCHLESS 36" KITCHEN-HEATER GAS RANGE**

Buy It At Norman's For As Little As **\$2.05** WEEKLY

**Caloric NEW MATCHLESS 40" WITH HI BROILER GAS RANGE**

Buy It At Norman's For As Little As **\$3.30** WEEKLY

**Caloric NEW MATCHLESS 36" KITCHEN-HEATER GAS RANGE**

Buy It At Norman's For As Little As **\$2.05** WEEKLY

**Caloric NEW MATCHLESS 40" WITH HI BROILER GAS RANGE**

Buy It At Norman's For As Little As **\$3.30** WEEKLY

**Caloric NEW MATCHLESS 36" KITCHEN-HEATER GAS RANGE**

Buy It At Norman's For As Little As **\$2.05** WEEKLY

**Caloric NEW MATCHLESS 40" WITH HI BROILER GAS RANGE**

Buy It At Norman's For As Little As **\$3.30** WEEKLY

**Caloric NEW MATCHLESS 36" KITCHEN-HEATER GAS RANGE**

Buy It At Norman's For As Little As **\$2.05** WEEKLY

**Caloric NEW MATCHLESS 40" WITH HI BROILER GAS RANGE**

Buy It At Norman's For As Little As **\$3.30** WEEKLY

**Caloric NEW MATCHLESS 36" KITCHEN-HEATER GAS RANGE**

Buy It At Norman's For As Little As **\$2.05** WEEKLY

**Caloric NEW MATCHLESS 40" WITH HI BROILER GAS RANGE**

Buy It At Norman's For As Little As **\$3.30** WEEKLY

**Caloric NEW MATCHLESS 36" KITCHEN-HEATER GAS RANGE**

Buy It At Norman's For As Little As **\$2.05** WEEKLY

**Caloric NEW MATCHLESS 40" WITH HI BROILER GAS RANGE**

Buy It At Norman's For As Little As **\$3.30** WEEKLY

**Caloric NEW MATCHLESS 36" KITCHEN-HEATER GAS RANGE**

Buy It At Norman's For As Little As **\$2.05** WEEKLY

**Caloric NEW MATCHLESS 40" WITH HI BROILER GAS RANGE**

Buy It At Norman's For As Little As **\$3.30** WEEKLY

**Caloric NEW MATCHLESS 36" KITCHEN-HEATER GAS RANGE**

Buy It At Norman's For As Little As **\$2.05** WEEKLY

**Caloric NEW MATCHLESS 40" WITH HI BROILER GAS RANGE**

Buy It At Norman's For As Little As **\$3.30** WEEKLY

**Caloric NEW MATCHLESS 36" KITCHEN-HEATER GAS RANGE**

Buy It At Norman's For As Little As **\$2.05** WEEKLY

**Caloric NEW MATCHLESS 40" WITH HI BROILER GAS RANGE**

Buy It At Norman's For As Little As **\$3.30** WEEKLY

**Caloric NEW MATCHLESS 36" KITCHEN-HEATER GAS RANGE**

Buy It At Norman's For As Little As **\$2.05** WEEKLY

**Caloric NEW MATCHLESS 40" WITH HI BROILER GAS RANGE**

Buy It At Norman's For As Little As **\$3.30** WEEKLY

**Caloric NEW MATCHLESS 36" KITCHEN-HEATER GAS RANGE**

Buy It At Norman's For As Little As **\$2.05** WEEKLY

**Caloric NEW MATCHLESS 40" WITH HI BROILER GAS RANGE**

Buy It At Norman's For As Little As **\$3.30** WEEKLY

**Caloric NEW MATCHLESS 36" KITCHEN-HEATER GAS RANGE**

Buy It At Norman's For As Little As **\$2.05** WEEKLY

**Caloric NEW MATCHLESS 40" WITH HI BROILER GAS RANGE**

Buy It At Norman's For As Little As **\$3.30** WEEKLY

**Caloric NEW MATCHLESS 36" KITCHEN-HEATER GAS RANGE**

Buy It At Norman's For As Little As **\$2.05** WEEKLY

**Caloric NEW MATCHLESS 40" WITH HI BROILER GAS RANGE**

Buy It At Norman's For As Little As **\$3.30** WEEKLY

**Caloric NEW MATCHLESS 36" KITCHEN-HEATER GAS RANGE**

Buy It At Norman's For As Little As **\$2.05** WEEKLY

**Caloric NEW MATCHLESS 40" WITH HI BROILER GAS RANGE**

Buy It At Norman's For As Little As **\$3.30** WEEKLY

**Caloric NEW MATCHLESS 36" KITCHEN-HEATER GAS RANGE**

Buy It At Norman's For As Little As **\$2.05** WEEKLY

**Caloric NEW MATCHLESS 40" WITH HI BROILER GAS RANGE**

Buy It At Norman's For As Little As **\$3.30** WEEKLY

**Caloric NEW MATCHLESS 36" KITCHEN-HEATER GAS RANGE**

Buy It At Norman's For As Little As **\$2.05** WEEKLY

**Caloric NEW MATCHLESS 40" WITH HI BROILER GAS RANGE**

Buy It At Norman's For As Little As **\$3.30** WEEKLY

**Caloric NEW MATCHLESS 36" KITCHEN-HEATER GAS RANGE**

Buy It At Norman's For As Little As **\$2.05** WEEKLY

**Caloric NEW MATCHLESS 40" WITH HI BROILER GAS RANGE**

Buy It At Norman's For As Little As **\$3.30** WEEKLY

**Caloric NEW MATCHLESS 36" KITCHEN-HEATER GAS RANGE**

Buy It At Norman's For As Little As **\$2.05** WEEKLY

**Caloric NEW MATCHLESS 40" WITH HI BROILER GAS RANGE**

Buy It At Norman's For As Little As **\$3.30** WEEKLY

**Caloric NEW MATCHLESS 36" KITCHEN-HEATER GAS RANGE**

Buy It At Norman's For As Little As **\$2.05** WEEKLY

**Caloric NEW MATCHLESS 40" WITH HI BROILER GAS RANGE**

Buy It At Norman's For As Little As **\$3.30** WEEKLY

**Caloric NEW MATCHLESS 36" KITCHEN-HEATER GAS RANGE**

Buy It At Norman's For As Little As **\$2.05** WEEKLY

**Caloric NEW MATCHLESS 40" WITH HI BROILER GAS RANGE**

Buy It At Norman's For As Little As **\$3.30** WEEKLY

**Caloric NEW MATCHLESS 36" KITCHEN-HEATER GAS RANGE**

Buy It At Norman's For As Little As **\$2.05** WEEKLY

**Caloric NEW MATCHLESS 40" WITH HI BROILER GAS RANGE**

Buy It At Norman's For As Little As **\$3.30** WEEKLY

**Caloric NEW MATCHLESS 36" KITCHEN-HEATER GAS RANGE**

Buy It At Norman's For As Little As **\$2.05** WEEKLY

**Caloric NEW MATCHLESS 40" WITH HI BROILER GAS RANGE**

Buy It At Norman's For As Little As **\$3.30** WEEKLY

**Caloric NEW MATCHLESS 36" KITCHEN-HEATER GAS RANGE**

Buy It At Norman's For As Little As **\$2.05** WEEKLY

**Caloric NEW MATCHLESS 40" WITH HI BROILER GAS RANGE**

Buy It At Norman's For As Little As **\$3.30** WEEKLY

**Caloric NEW MATCHLESS 36" KITCHEN-HEATER GAS RANGE**

Buy It At Norman's For As Little As **\$2.05** WEEKLY

**Caloric NEW MATCHLESS 40" WITH HI BROILER GAS RANGE**

Buy It At Norman's For As Little As **\$3.30** WEEKLY

**Caloric NEW MATCHLESS 36" KITCHEN-HEATER GAS RANGE**

Buy It At Norman's For As Little As **\$2.05** WEEKLY

**Caloric NEW MATCHLESS 40" WITH HI BROILER GAS RANGE**

Buy It At Norman's For As Little As **\$3.30** WEEKLY

**Caloric NEW MATCHLESS 36" KITCHEN-HEATER GAS RANGE**

Buy It At Norman's For As Little As **\$2.05** WEEKLY

**Caloric NEW MATCHLESS 40" WITH HI BROILER GAS RANGE**

Buy It At Norman's For As Little As **\$3.30** WEEKLY

**Caloric NEW MATCHLESS 36" KITCHEN-HEATER GAS RANGE**

Buy It At

# NORMAN'S BARGAIN SPECTACULAR

Celebrating The Opening Of Our Newly Enlarged Kitchen Planning & Homefurnishing Depts.

### ALL TIME LOW PRICE



## \$138.88

STAINLESS STEEL SINKS

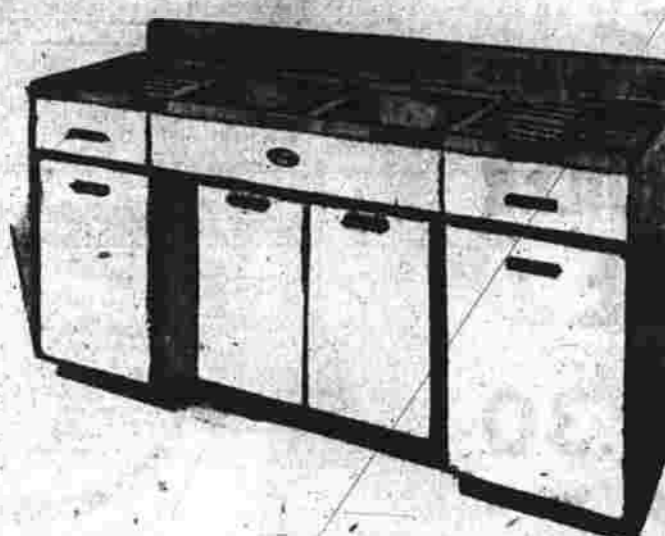
LESS THAN REGULAR PORCELAIN... EASY MONTHLY TERMS  
Imagine a completely assembled, feature-packed, deluxe cabinet sink with a lifetime stainless steel top for just \$138.88. That's just \$13.00 more than the regular price of the stainless top alone.

# "steal" THIS

Tracy

66-100CM  
**2-BOWL STAINLESS STEEL SINK**

FOR



You're set for life with this buy of a lifetime. Like fine silver, Tracy's stainless steel gets lovelier with age. Nothing stains it... and you've nary a worry about chipping, cracking, warping or rotting. And decorators are acclaiming stainless steel as one of the big things on tomorrow's kitchen horizon.



YOU'VE NEVER SEEN A VALUE LIKE THIS!

Get Norman's Low, Low Price

# NORMAN'S

445 HARTFORD ROAD, Near McKEE

OPEN DAILY, 9 to 9 FREE PARKING

### SPECIAL PURCHASE!

## MOTOROLA

3-Way Portable RADIO

A Great Value **\$23.75**

ALLIANCE TENNA-ROTOR REG. \$34.25 **\$26.50**  
JUST ARRIVED PRESTO ELECTRIC SKILLET REG. \$23.15 **\$15.95**

### TOASTMASTER

2 SLICE

## TOASTER

IN NEW CARTONS - LIMITED QUANTITY  
Thousands Sold For **\$14.95**  
REG. \$22.95

### OSTERIZER

THE MAGIC BLENDER

Reg. \$44.95 **\$31.95**

AUTOMATIC ELECTRIC DEEP FRYER and COOKER REG. \$19.95 **\$12.50**  
ADMIRAL 7 TRANSISTOR PORTABLE RADIO REG. \$69.95 **\$39.95**

### RED TAG SPECIAL

ASSORTED

## ELECTRIC WALL CLOCKS

Values Up To **\$2.55** Each  
REG. \$8.95

\*PLUS FEDERAL TAX

## S-A-V-E \$40.50

Famous Make  
**ORTHOPEDIC**  
TYPE  
**MATTRESS**



ON MATCHING BOX SPRING **\$49**  
Reg. \$89.50

- BUTTON FREE
- TWIN or FULL
- GUARANTEED FOR 15 YEARS

Also Available  
SIMMONS, SEALY ENGLANDER, GOLD BOND BLUE BELL BEDDING

**INNERSPRING** MATTRESSES or BOX SPRINGS **\$21.41**  
Regularly \$39.95

**HOLLYWOOD** BED OUTFITS  
Regularly \$49.50 **\$28**

- Attractive Plastic Headboard
- Mattress and Box Spring
- Legs—30-Inch Size

**INNERSPRING 2-PILLOW BACK** STUDIO COUCH  
Regularly \$79.95 **\$54.95**

CHOICE SELECTION OF COVERINGS

**SAVE ON 5-Pc. KITCHEN SETS**  
Chrome Sets, Black and Brass Sets, Bronze Sets

- Smart Styling
- Sturdy Construction
- Newest Color Combinations

**\$49.95**

**INNERSPRING** WET-PROOF Crib Mattress **\$13.80**  
Reg. \$19.95

**B-I-G SAVINGS** On 4 and 5 Drawer Chests

EXTRAORDINARY SAVINGS ON  
Cris, High Chairs, Car Beds and Seats, Play-Yards, Strollers, Baby Carriages and other famous make nursery furniture.

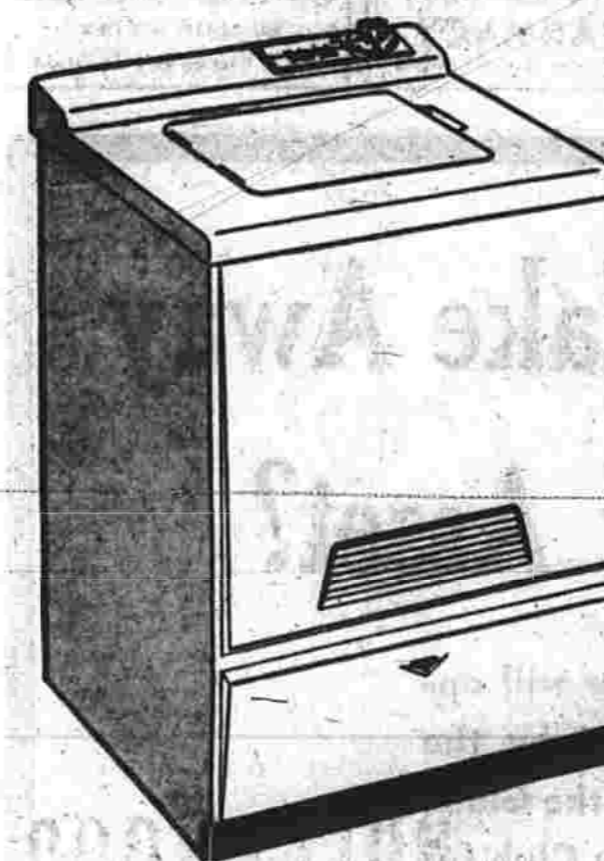
# NORMAN'S BARGAIN SPECTACULAR

Celebrating The Opening of Our Newly Enlarged Appliance Department

Come In And Let Us Show You The

# HOTPOINT

DIFFERENCE  
It's Unequaled



SAVE \$\$\$  
FULLY  
AUTOMATIC  
WASHER

## 169<sup>95</sup>

- ALL PORCELAIN INSIDE and OUT
- HOT and WARM WASH WATER SELECTION
- FULL FAMILY SIZE
- FULL or PARTIAL LOADS

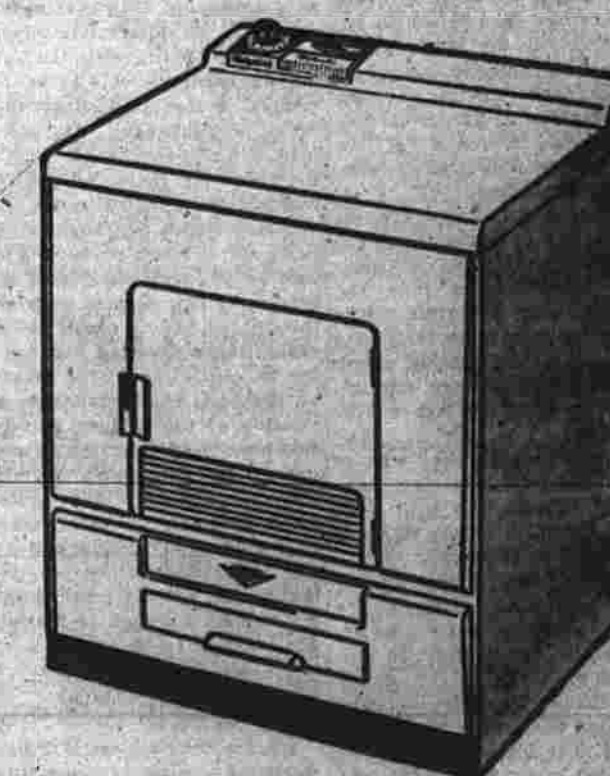
All Hotpoint Washers at Sensational Savings -- Come In and See The Difference

SAVE \$\$\$  
AUTOMATIC  
CLOTHES  
DRYER

## 119<sup>95</sup>

- AUTOMATIC THERMOSTAT
- ALL PORCELAIN DRUM
- LARGE-LINT SCREEN

Get Year 'Round Sunshine No Matter What The Weather



SAVE \$\$\$  
12.3 CU. FT.  
MASTER  
REFRIGERATOR

## 209<sup>95</sup>

- Sturdy Aluminum Door Shelves
- 20 1/2 Sq. Ft. of Shelving
- Porcelain Crispers

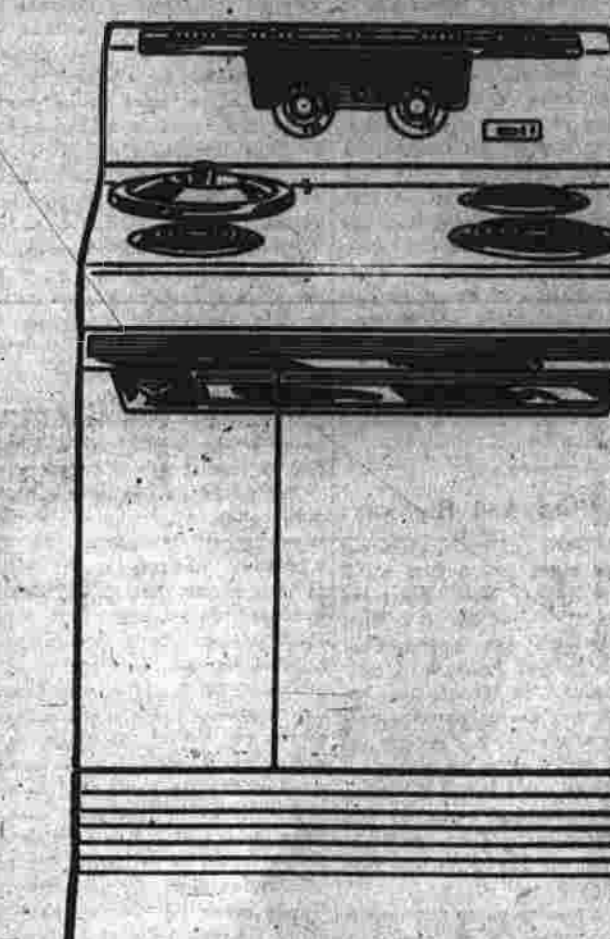
5-YEAR FACTORY WARRANTY ON SEALED-IN UNIT

SAVE \$\$\$  
BIG 30 INCH  
ELECTRIC  
RANGE

## 164<sup>95</sup>

- ALL PORCELAIN
- CALROD UNIT EQUIPPED
- PUSHBUTTON CONVENIENCE

HOTPOINT RANGE LEADERSHIP FOR OVER 50 YEARS



EASY CREDIT TERMS TAKE UP TO 30 MONTHS TO PAY

# NORMAN'S

445 HARTFORD ROAD, Near McKEE

OPEN DAILY, 9 to 9 FREE PARKING

FREE DELIVERY  
FREE 1 YEAR SERVICE

17 OCT 17

Manchester Evening Herald

Published by THE HERALD PUBLISHING CO., INC. 100 South Main Street, Manchester, Conn. 06103. Second-class postage paid at Manchester, Conn., and at additional mailing offices. Postmaster: Please send address changes to THE HERALD PUBLISHING CO., INC., 100 South Main Street, Manchester, Conn. 06103. Telephone: 253-1111. Cable: 5-1111. Telegram: 5-1111. Subscriptions: Single copy 5¢. Yearly subscription \$5.00 in advance. Foreign postage extra. Classified advertising: See page 10. Display advertising: See page 10. Copyright, 1957, by The Herald Publishing Co., Inc.

Route 6 has little, perhaps too little, of the worry of East Hartford or Peabody, and we seem, instead, to parallel the attitude of New Rochelle, another community which has been invaded by the New England Thruway.

It is possible to conceive that this new road is an exciting thing, a "shot in the arm" for its development. It is possible to see a new shopping center in the location of the main Thruway interchange, and New Rochelle, which has been invaded by the Thruway, has been able to take advantage of the appeal of the suburban shopping centers which have been springing Main St. serious competition.

The only remedy we can suggest is drastic. It is that East Hartford invade the planning of the Thruway with a demand that that depart, in its distribution of traffic, in accordance with the prospective existence of all the new bridges across the Connecticut River and abandon its present plan, which is to take all the traffic from all these bridges and bunch it up through East Hartford and Manchester. The Highway Department, it seems obvious, is proceeding by plan, completed long before the bridges were even thought of. If it could be persuaded, as a planning exercise, to try to handle the traffic on the basis of the existence and location of the bridges, it might find it could do things which would change its own mind. It might find, for instance, that Route 6 could come over the new Western Field-Glastonbury bridge and head due east toward Providence, its destination, without going through either East Hartford or Manchester.

And, although our diplomacy takes Tito's action as if it were a dose of poison, Tito may still be right. Walter Lippmann, in the Herald Tribune and Hartford Courant the other day, indulged himself in the wifely assumption that perhaps we Americans were willing at least to have some "hard truths" about some of our policies, and proceeded to have himself a columnar ball naming three major fallacies in which we are indulging ourselves. First, he listed our China policy, "based on the notion that if we extricate the Peking government, it will eventually collapse, be overthrown, or surrender. While we wait for one of these happy endings, we subsidize a Chinese government on Formosa which can never be the government of China, and is manifestly deteriorating."

Second, Lippmann listed our German policy, which, he wrote, "has been largely dominated by Dr. Adenauer" and "is based on the curious notion that Russia can be induced to surrender, to allow Eastern Germany to be swallowed by Western Germany, and to let a reunified Germany be incorporated in the strongest European military power in NATO. If there is a single responsible and informed man who, when he is off the record, believes in this fairy tale, I have never met him. . . . A German policy which is so unrealistic and ambiguous must in the nature of things crack up. Yet we have no other German policy."

Third, to give Lippmann his sweep before we go back to Tito, he charged that "our Middle Eastern policy is based on the extraordinary notion that Russia, the greatest power bordering on the Middle East, can, like Charlemagne in the days of the supremacy of this underlying fallacy, no policy can be undertaken in the Middle East can really succeed."

Summarizing Lippmann, we have it in a grim joke in East Hartford, too. East Hartford is well off. It is a grim joke to put one man's head in a sack and to have it come out in a sack of manure. We in Manchester are supposed to consider the new route a blessing, but not that much of a blessing. But if we can't stand for East Hartford's showing some of the route off on us, we can at least understand what is bothering East Hartford.

There is a story going the rounds down in Peabody, N. Y., an erstwhile residential community which is now in process of submitting to the new England Thruway, which is to connect with the new Connecticut Thruway.

Skywatch Schedule

Friday, Oct. 18  
2 a.m. - 4 a.m. . . . . . Volunteered Needed  
4 a.m. - 6 a.m. . . . . . Volunteered Needed  
6 a.m. - 8 a.m. . . . . . Olive Charlier  
8 a.m. - 10 a.m. . . . . . Louis R. Call  
10 a.m. - Noon . . . . . Gary Sullivan, J. Victor Marcin  
Noon - 2 p.m. . . . . . W. Joseph Lemire, Joseph Schell  
2 p.m. - 4 p.m. . . . . . Wayne Garland  
4 p.m. - 6 p.m. . . . . . Olive Hey  
6 p.m. - 8 p.m. . . . . . Joseph Marcin, J. Victor Marcin  
8 p.m. - 10 p.m. . . . . . Skywatch Post located on top of Manchester Police Station  
10 p.m. - Midnight . . . . . Joseph Marcin, J. Victor Marcin  
Volunteers may register at Civil Defense Headquarters, Municipal Building, Monday, Wednesday or Friday from 1 to 3 p.m.

sometimes. In the special session, described as a sneak rider in the bus company tax revision bill. It was not, exactly that, for the original statement of purpose for the bill contained a reference to the "local" tax relief, and the provision, of course, there in the bill for anybody to discover all the details was deleted and passed. But there was something of a mysteriously charmed life for this particular provision. In that none of the nayvoters who subsequently crusaded so heroically against it, after the regular session had adjourned, seemed to be alerted to it while it was over until the last out was recorded. That is one of the curious things about the bill. There is a little doubt that the opposition would have developed the regular session, if it had been alerted.

That there was such a smooth passage for a provision certain to be financially troublesome should be a cause for concern. It is a cause for concern because it is a cause for concern. It is a cause for concern because it is a cause for concern. It is a cause for concern because it is a cause for concern.

It is a cause for concern because it is a cause for concern. It is a cause for concern because it is a cause for concern. It is a cause for concern because it is a cause for concern. It is a cause for concern because it is a cause for concern.

It is a cause for concern because it is a cause for concern. It is a cause for concern because it is a cause for concern. It is a cause for concern because it is a cause for concern. It is a cause for concern because it is a cause for concern.

It is a cause for concern because it is a cause for concern. It is a cause for concern because it is a cause for concern. It is a cause for concern because it is a cause for concern. It is a cause for concern because it is a cause for concern.

It is a cause for concern because it is a cause for concern. It is a cause for concern because it is a cause for concern. It is a cause for concern because it is a cause for concern. It is a cause for concern because it is a cause for concern.

It is a cause for concern because it is a cause for concern. It is a cause for concern because it is a cause for concern. It is a cause for concern because it is a cause for concern. It is a cause for concern because it is a cause for concern.

It is a cause for concern because it is a cause for concern. It is a cause for concern because it is a cause for concern. It is a cause for concern because it is a cause for concern. It is a cause for concern because it is a cause for concern.

It is a cause for concern because it is a cause for concern. It is a cause for concern because it is a cause for concern. It is a cause for concern because it is a cause for concern. It is a cause for concern because it is a cause for concern.

Droodles

By ROGER FRILE  
"Under Her Mourning Snake"  
That really warm the heart,  
Once in a while a friendship's formed.  
To last a life time through;  
It really does happen, just once in a while.  
It happened to me, and you, and Mrs. Anna Nelson.

"Under Her Mourning Snake"  
That really warm the heart,  
Once in a while a friendship's formed.  
To last a life time through;  
It really does happen, just once in a while.  
It happened to me, and you, and Mrs. Anna Nelson.

"Under Her Mourning Snake"  
That really warm the heart,  
Once in a while a friendship's formed.  
To last a life time through;  
It really does happen, just once in a while.  
It happened to me, and you, and Mrs. Anna Nelson.

"Under Her Mourning Snake"  
That really warm the heart,  
Once in a while a friendship's formed.  
To last a life time through;  
It really does happen, just once in a while.  
It happened to me, and you, and Mrs. Anna Nelson.

"Under Her Mourning Snake"  
That really warm the heart,  
Once in a while a friendship's formed.  
To last a life time through;  
It really does happen, just once in a while.  
It happened to me, and you, and Mrs. Anna Nelson.

"Under Her Mourning Snake"  
That really warm the heart,  
Once in a while a friendship's formed.  
To last a life time through;  
It really does happen, just once in a while.  
It happened to me, and you, and Mrs. Anna Nelson.

"Under Her Mourning Snake"  
That really warm the heart,  
Once in a while a friendship's formed.  
To last a life time through;  
It really does happen, just once in a while.  
It happened to me, and you, and Mrs. Anna Nelson.

"Under Her Mourning Snake"  
That really warm the heart,  
Once in a while a friendship's formed.  
To last a life time through;  
It really does happen, just once in a while.  
It happened to me, and you, and Mrs. Anna Nelson.

"Under Her Mourning Snake"  
That really warm the heart,  
Once in a while a friendship's formed.  
To last a life time through;  
It really does happen, just once in a while.  
It happened to me, and you, and Mrs. Anna Nelson.

"Under Her Mourning Snake"  
That really warm the heart,  
Once in a while a friendship's formed.  
To last a life time through;  
It really does happen, just once in a while.  
It happened to me, and you, and Mrs. Anna Nelson.

A Thought for Today

Sponsored by the Manchester Council of Churches  
The Friends We Have  
One of the good things that always comes out of a serious illness is the consciousness of the wonderful friends we have. It also reminds us how poor all of us would be if we did not have friends. To all those who are such fine friends to so many of us I would like to dedicate a little poem that I have known and loved for a long time:  
Who's a friend right is found  
Who's a friend right is found  
Who's a friend right is found  
Who's a friend right is found

Sponsored by the Manchester Council of Churches  
The Friends We Have  
One of the good things that always comes out of a serious illness is the consciousness of the wonderful friends we have. It also reminds us how poor all of us would be if we did not have friends. To all those who are such fine friends to so many of us I would like to dedicate a little poem that I have known and loved for a long time:  
Who's a friend right is found  
Who's a friend right is found  
Who's a friend right is found  
Who's a friend right is found

Sponsored by the Manchester Council of Churches  
The Friends We Have  
One of the good things that always comes out of a serious illness is the consciousness of the wonderful friends we have. It also reminds us how poor all of us would be if we did not have friends. To all those who are such fine friends to so many of us I would like to dedicate a little poem that I have known and loved for a long time:  
Who's a friend right is found  
Who's a friend right is found  
Who's a friend right is found  
Who's a friend right is found

Sponsored by the Manchester Council of Churches  
The Friends We Have  
One of the good things that always comes out of a serious illness is the consciousness of the wonderful friends we have. It also reminds us how poor all of us would be if we did not have friends. To all those who are such fine friends to so many of us I would like to dedicate a little poem that I have known and loved for a long time:  
Who's a friend right is found  
Who's a friend right is found  
Who's a friend right is found  
Who's a friend right is found

Sponsored by the Manchester Council of Churches  
The Friends We Have  
One of the good things that always comes out of a serious illness is the consciousness of the wonderful friends we have. It also reminds us how poor all of us would be if we did not have friends. To all those who are such fine friends to so many of us I would like to dedicate a little poem that I have known and loved for a long time:  
Who's a friend right is found  
Who's a friend right is found  
Who's a friend right is found  
Who's a friend right is found

Sponsored by the Manchester Council of Churches  
The Friends We Have  
One of the good things that always comes out of a serious illness is the consciousness of the wonderful friends we have. It also reminds us how poor all of us would be if we did not have friends. To all those who are such fine friends to so many of us I would like to dedicate a little poem that I have known and loved for a long time:  
Who's a friend right is found  
Who's a friend right is found  
Who's a friend right is found  
Who's a friend right is found

Sponsored by the Manchester Council of Churches  
The Friends We Have  
One of the good things that always comes out of a serious illness is the consciousness of the wonderful friends we have. It also reminds us how poor all of us would be if we did not have friends. To all those who are such fine friends to so many of us I would like to dedicate a little poem that I have known and loved for a long time:  
Who's a friend right is found  
Who's a friend right is found  
Who's a friend right is found  
Who's a friend right is found

Sponsored by the Manchester Council of Churches  
The Friends We Have  
One of the good things that always comes out of a serious illness is the consciousness of the wonderful friends we have. It also reminds us how poor all of us would be if we did not have friends. To all those who are such fine friends to so many of us I would like to dedicate a little poem that I have known and loved for a long time:  
Who's a friend right is found  
Who's a friend right is found  
Who's a friend right is found  
Who's a friend right is found

Sponsored by the Manchester Council of Churches  
The Friends We Have  
One of the good things that always comes out of a serious illness is the consciousness of the wonderful friends we have. It also reminds us how poor all of us would be if we did not have friends. To all those who are such fine friends to so many of us I would like to dedicate a little poem that I have known and loved for a long time:  
Who's a friend right is found  
Who's a friend right is found  
Who's a friend right is found  
Who's a friend right is found

Sponsored by the Manchester Council of Churches  
The Friends We Have  
One of the good things that always comes out of a serious illness is the consciousness of the wonderful friends we have. It also reminds us how poor all of us would be if we did not have friends. To all those who are such fine friends to so many of us I would like to dedicate a little poem that I have known and loved for a long time:  
Who's a friend right is found  
Who's a friend right is found  
Who's a friend right is found  
Who's a friend right is found

The Baby Has Been Named...

Elizabeth Arden COSMETICS  
"We deliver"  
Arthur Drug Stores  
So Fashion-Right for Your Kitchen - The Highest Sales Look

Elizabeth Arden COSMETICS  
"We deliver"  
Arthur Drug Stores  
So Fashion-Right for Your Kitchen - The Highest Sales Look

Elizabeth Arden COSMETICS  
"We deliver"  
Arthur Drug Stores  
So Fashion-Right for Your Kitchen - The Highest Sales Look

Elizabeth Arden COSMETICS  
"We deliver"  
Arthur Drug Stores  
So Fashion-Right for Your Kitchen - The Highest Sales Look

Elizabeth Arden COSMETICS  
"We deliver"  
Arthur Drug Stores  
So Fashion-Right for Your Kitchen - The Highest Sales Look

Elizabeth Arden COSMETICS  
"We deliver"  
Arthur Drug Stores  
So Fashion-Right for Your Kitchen - The Highest Sales Look

Elizabeth Arden COSMETICS  
"We deliver"  
Arthur Drug Stores  
So Fashion-Right for Your Kitchen - The Highest Sales Look

Elizabeth Arden COSMETICS  
"We deliver"  
Arthur Drug Stores  
So Fashion-Right for Your Kitchen - The Highest Sales Look

Elizabeth Arden COSMETICS  
"We deliver"  
Arthur Drug Stores  
So Fashion-Right for Your Kitchen - The Highest Sales Look

Elizabeth Arden COSMETICS  
"We deliver"  
Arthur Drug Stores  
So Fashion-Right for Your Kitchen - The Highest Sales Look

Stafford Appeals To Young People To Donate Blood

Howard Stafford, vice chairman for the Manchester Red Cross Blood Program, has issued an appeal to the young people of this town to rally to the next visit of the Bloodmobile unit Monday at Center Church from 1:45 to 6:30 p.m.

Howard Stafford, vice chairman for the Manchester Red Cross Blood Program, has issued an appeal to the young people of this town to rally to the next visit of the Bloodmobile unit Monday at Center Church from 1:45 to 6:30 p.m.

Howard Stafford, vice chairman for the Manchester Red Cross Blood Program, has issued an appeal to the young people of this town to rally to the next visit of the Bloodmobile unit Monday at Center Church from 1:45 to 6:30 p.m.

Howard Stafford, vice chairman for the Manchester Red Cross Blood Program, has issued an appeal to the young people of this town to rally to the next visit of the Bloodmobile unit Monday at Center Church from 1:45 to 6:30 p.m.

Howard Stafford, vice chairman for the Manchester Red Cross Blood Program, has issued an appeal to the young people of this town to rally to the next visit of the Bloodmobile unit Monday at Center Church from 1:45 to 6:30 p.m.

Howard Stafford, vice chairman for the Manchester Red Cross Blood Program, has issued an appeal to the young people of this town to rally to the next visit of the Bloodmobile unit Monday at Center Church from 1:45 to 6:30 p.m.

Howard Stafford, vice chairman for the Manchester Red Cross Blood Program, has issued an appeal to the young people of this town to rally to the next visit of the Bloodmobile unit Monday at Center Church from 1:45 to 6:30 p.m.

Howard Stafford, vice chairman for the Manchester Red Cross Blood Program, has issued an appeal to the young people of this town to rally to the next visit of the Bloodmobile unit Monday at Center Church from 1:45 to 6:30 p.m.

Howard Stafford, vice chairman for the Manchester Red Cross Blood Program, has issued an appeal to the young people of this town to rally to the next visit of the Bloodmobile unit Monday at Center Church from 1:45 to 6:30 p.m.

Howard Stafford, vice chairman for the Manchester Red Cross Blood Program, has issued an appeal to the young people of this town to rally to the next visit of the Bloodmobile unit Monday at Center Church from 1:45 to 6:30 p.m.

Columbia Symphony to Start Nov. 10; 'Pops' Concert Due in May

Columbia, Oct. 17 (Special)—The Eastern Connecticut Symphony Concerts will begin this year on Nov. 10 at Windham State Teachers College. No concerts will be scheduled during the winter months to avoid bad weather and traveling conditions.

Columbia, Oct. 17 (Special)—The Eastern Connecticut Symphony Concerts will begin this year on Nov. 10 at Windham State Teachers College. No concerts will be scheduled during the winter months to avoid bad weather and traveling conditions.

Columbia, Oct. 17 (Special)—The Eastern Connecticut Symphony Concerts will begin this year on Nov. 10 at Windham State Teachers College. No concerts will be scheduled during the winter months to avoid bad weather and traveling conditions.

Columbia, Oct. 17 (Special)—The Eastern Connecticut Symphony Concerts will begin this year on Nov. 10 at Windham State Teachers College. No concerts will be scheduled during the winter months to avoid bad weather and traveling conditions.

Columbia, Oct. 17 (Special)—The Eastern Connecticut Symphony Concerts will begin this year on Nov. 10 at Windham State Teachers College. No concerts will be scheduled during the winter months to avoid bad weather and traveling conditions.

Columbia, Oct. 17 (Special)—The Eastern Connecticut Symphony Concerts will begin this year on Nov. 10 at Windham State Teachers College. No concerts will be scheduled during the winter months to avoid bad weather and traveling conditions.

Columbia, Oct. 17 (Special)—The Eastern Connecticut Symphony Concerts will begin this year on Nov. 10 at Windham State Teachers College. No concerts will be scheduled during the winter months to avoid bad weather and traveling conditions.

Columbia, Oct. 17 (Special)—The Eastern Connecticut Symphony Concerts will begin this year on Nov. 10 at Windham State Teachers College. No concerts will be scheduled during the winter months to avoid bad weather and traveling conditions.

Columbia, Oct. 17 (Special)—The Eastern Connecticut Symphony Concerts will begin this year on Nov. 10 at Windham State Teachers College. No concerts will be scheduled during the winter months to avoid bad weather and traveling conditions.

Columbia, Oct. 17 (Special)—The Eastern Connecticut Symphony Concerts will begin this year on Nov. 10 at Windham State Teachers College. No concerts will be scheduled during the winter months to avoid bad weather and traveling conditions.

50 Asian Flu Deaths Noted Across Nation

(Continued from Page One)  
partments. Because the number of cases is so large, it is impossible to confirm by means of a lengthy laboratory test whether each one actually is Asian flu.

(Continued from Page One)  
partments. Because the number of cases is so large, it is impossible to confirm by means of a lengthy laboratory test whether each one actually is Asian flu.

(Continued from Page One)  
partments. Because the number of cases is so large, it is impossible to confirm by means of a lengthy laboratory test whether each one actually is Asian flu.

(Continued from Page One)  
partments. Because the number of cases is so large, it is impossible to confirm by means of a lengthy laboratory test whether each one actually is Asian flu.

(Continued from Page One)  
partments. Because the number of cases is so large, it is impossible to confirm by means of a lengthy laboratory test whether each one actually is Asian flu.

(Continued from Page One)  
partments. Because the number of cases is so large, it is impossible to confirm by means of a lengthy laboratory test whether each one actually is Asian flu.

(Continued from Page One)  
partments. Because the number of cases is so large, it is impossible to confirm by means of a lengthy laboratory test whether each one actually is Asian flu.

(Continued from Page One)  
partments. Because the number of cases is so large, it is impossible to confirm by means of a lengthy laboratory test whether each one actually is Asian flu.

(Continued from Page One)  
partments. Because the number of cases is so large, it is impossible to confirm by means of a lengthy laboratory test whether each one actually is Asian flu.

(Continued from Page One)  
partments. Because the number of cases is so large, it is impossible to confirm by means of a lengthy laboratory test whether each one actually is Asian flu.

Do False Teeth Rock, Slide or Slip?

Do False Teeth Rock, Slide or Slip?  
PARTICULARLY AN IMPROVED POWER TO HOLD THEM IN PLACE. They are made of a special material that is more like the natural teeth. They are made of a special material that is more like the natural teeth.

Do False Teeth Rock, Slide or Slip?  
PARTICULARLY AN IMPROVED POWER TO HOLD THEM IN PLACE. They are made of a special material that is more like the natural teeth. They are made of a special material that is more like the natural teeth.

Do False Teeth Rock, Slide or Slip?  
PARTICULARLY AN IMPROVED POWER TO HOLD THEM IN PLACE. They are made of a special material that is more like the natural teeth. They are made of a special material that is more like the natural teeth.

Do False Teeth Rock, Slide or Slip?  
PARTICULARLY AN IMPROVED POWER TO HOLD THEM IN PLACE. They are made of a special material that is more like the natural teeth. They are made of a special material that is more like the natural teeth.

Do False Teeth Rock, Slide or Slip?  
PARTICULARLY AN IMPROVED POWER TO HOLD THEM IN PLACE. They are made of a special material that is more like the natural teeth. They are made of a special material that is more like the natural teeth.

Do False Teeth Rock, Slide or Slip?  
PARTICULARLY AN IMPROVED POWER TO HOLD THEM IN PLACE. They are made of a special material that is more like the natural teeth. They are made of a special material that is more like the natural teeth.

Do False Teeth Rock, Slide or Slip?  
PARTICULARLY AN IMPROVED POWER TO HOLD THEM IN PLACE. They are made of a special material that is more like the natural teeth. They are made of a special material that is more like the natural teeth.

Do False Teeth Rock, Slide or Slip?  
PARTICULARLY AN IMPROVED POWER TO HOLD THEM IN PLACE. They are made of a special material that is more like the natural teeth. They are made of a special material that is more like the natural teeth.

Do False Teeth Rock, Slide or Slip?  
PARTICULARLY AN IMPROVED POWER TO HOLD THEM IN PLACE. They are made of a special material that is more like the natural teeth. They are made of a special material that is more like the natural teeth.

Do False Teeth Rock, Slide or Slip?  
PARTICULARLY AN IMPROVED POWER TO HOLD THEM IN PLACE. They are made of a special material that is more like the natural teeth. They are made of a special material that is more like the natural teeth.

Will You Let Politics Take Away an Important Civic Asset?

Next Tuesday the people of Manchester will approve or disapprove an ordinance passed by the Town Directors to lease a small part of the Globe Hollow Tract to the Manchester Country Club for use as a golf club.

This should not be a political issue. Your vote should be determined by your own appraisal of the Country Club as an asset to the community . . . the town's financial gain or loss. Your vote should not be affected by which political party you belong to.

The Country Club is one of our town's valuable assets. As other golf clubs, it attracts business and industry which provides jobs for our people. It offers without cost, its facilities to service clubs, business, social and professional groups, and it makes available its golf course to high school golf teams for practice and team matches.

The existence of the Club on land leased from the town means revenue to the town that could otherwise mean an increase in tax rates to the detriment of business, industry and the individual home owner. Over the 30-year period of the lease now under question the existence of the Club will actually mean a gain of \$460,000 to the Town as compared to an estimated cost to the Town of more than \$600,000 without a golf club. The difference in these dollar figures affects the pocketbook of every taxpayer.

Nearly every official and semi-official body, including both major political parties, the Planning Commission, the Development Commission, the Chamber of Commerce, the Hilliard Association, and others too numerous to mention, are convinced that the Manchester Country Club is an important civic asset, and should not be taken away from our community just because a certain few individuals are not interested in golf or a Country Club and take delight in making a political issue out of the present situation. When you VOTE NEXT TUESDAY let your own honest appraisal—not politics—decide what is right for your community.

THE MANCHESTER COUNTRY CLUB  
317 HIGHLAND ST., MANCHESTER, MI 3-4274

CHOICEST MEATS IN TOWN...!  
FRESH PORK SHOULDERS 39¢  
LEAN PORK FULL OR FLAVOR 46 lb. ave. 59¢

OCEAN FRESH—LIVE MAINE  
LOBSTERS  
M-M-M DELICIOUS TREAT THE FAMILY 59¢

HIGHLAND PARK MARKET  
317 HIGHLAND ST., MANCHESTER, MI 3-4274

PERSONAL NOTICES  
In Memoriam  
Card of Thanks

GOOD LUCK  
Attached are ten Good Luck Clovers. (Or ten complete wrappers from the Family Style Roll). Please send me my free Silver Dollar.

FREE 7¢ COUPON  
Redeem at your grocer's toward 2 lbs. of Good Luck Margarine, regular or family style

GOOD LUCK  
Attached are ten Good Luck Clovers. (Or ten complete wrappers from the Family Style Roll). Please send me my free Silver Dollar.

FREE 7¢ COUPON  
Redeem at your grocer's toward 2 lbs. of Good Luck Margarine, regular or family style

FREE 7¢ COUPON  
Redeem at your grocer's toward 2 lbs. of Good Luck Margarine, regular or family style



### \$4 Million Span Falls into River

Taylor, B.C., Oct. 17 (AP)—Left without support, when the steel crumpled beneath a 25,000-ton anchor block, the north span of the \$4 million, 2,200-foot Alaska Highway suspension bridge crashed into the Peace River yesterday.

No one was injured and 3,000 persons watched as the 485-foot section buckled and dropped with a tremendous roar, seven hours after engineers had noted the mercurian anchor was sinking.

The collapse cut the main highway into Alaska, but traffic—amounting to some 200 to 300 vehicles a day—was quickly rerouted to a small ferry 10 miles down stream.

The bridge to 600 miles north of Vancouver, B.C., and 40 miles northwest of Dawson Creek, B.C., starting point of the highway.

It was feared the center span

of the bridge also would give way as the only support were two 100-foot cable towers. Engineers said the structure was sagging and might come down "pretty soon."

The breakage severed telegraph and telephone lines into the Yukon and new lines were being strung today.

The bridge, largest of 133 on the northern road, was built in 1942 by the United States army when it constructed the then military vital Alaska highway. The piers were built by a Canadian firm but the superstructure was erected by American engineers.

Engineers had noted the mercurian anchor was sinking.

The collapse cut the main highway into Alaska, but traffic—amounting to some 200 to 300 vehicles a day—was quickly rerouted to a small ferry 10 miles down stream.

### Women Mark, Sort Articles for Sale

Mrs. Walter Gorman and Mrs. Paul Skelton head the committee of workers who have been busy today sorting and arranging merchandise for the annual fall rummage sale of the Women's Auxiliary of Manchester Memorial Hospital.

The sale will be held at the hospital on Friday, Oct. 18, from 10 a. m. to 4 p. m. The committee is made up of Mrs. Gorman, Mrs. Skelton, Mrs. Robert Russell, Mrs. Frank Watts and Mrs. Walter Gorman.

The sale will be held at the hospital on Friday, Oct. 18, from 10 a. m. to 4 p. m. The committee is made up of Mrs. Gorman, Mrs. Skelton, Mrs. Robert Russell, Mrs. Frank Watts and Mrs. Walter Gorman.

### TPC Will Compile Final Rt. 6 Report

The Town Planning Commission will meet in executive session Oct. 21 at 8 p. m. to compile and draw up its final report on Rt. 6.

Town Planning Administrator W. H. Maxwell said that the planning group would spend some time discussing the Rt. 6 and Blvd. St. extensions with regard to the new highway.

The report will be presented to the town board on Oct. 22.

### No More Chicken At School Dance

Halet, Mich., Oct. 17 (AP)—There'll be no more dancing of the "chickens" at teacher-sponsored dances in Halet school.

There's been no teacher ban on the controversial dance step, but teachers have unofficially agreed to avoid supervision of dances where it's allowed.

"It's simply too suggestive," said one school official.

Popular with the teenage set in recent years, the "chicken" is characterized by lots of winging and squinting.



**SUGAR HEART**

FOOD STORES

YOUR BEST, NEIGHBORHOOD STORES  
CARRY SUGAR HEART FOOD PRODUCTS

<b>SNOW'S Fish Chowder</b> 27c	<b>NIAGARA LAUNDRY STARCH</b> 12 Oz. 19c
<b>SNOW'S Corn Chowder 2 For 43c</b>	<b>ARGO GLOSS STARCH</b> 12 Oz. 13c
<b>SNOW'S Clam Chowder 25c</b>	<b>ARGO CORNSTARCH</b> 1 Lb. 14c
<b>SNOW'S Minced Clams 2 1/2 Oz. 25c</b>	<b>DELSEY</b> 4 Bolls 53c
<b>SNOW'S Minced Clams 2 1/2 Oz. 25c</b>	<b>KLEENEX</b> 400's 27c
<b>SNOW'S Minced Clams 2 1/2 Oz. 25c</b>	<b>KOTEX</b> Reg. 37c



## WHEN IT COMES TO VALUE... MORE PEOPLE COME TO FIRST FOOD

And there's good reason too! A good value means your money's worth. It means quality as well as low prices. Crisp produce, tender meats and the popular brands you have confidence in are the values we bring to you every day. Be sure to shop FIRST FOOD. You'll be glad you did.

# U. S. CHOICE CHUCK ROAST

BLOCK STYLE  
TENDER, JUICY,  
BONE-IN

## 39c lb.

7-RIB CUT **35c lb.**

U. S. CHOICE **BONELESS POT ROAST** Lb. 65c

**SMOKED PICNICS** Short Shank Lb. 39c

**Roasting CHICKENS** Oven Ready Lb. 49c

AUNT JEMIMA **PANCAKE MIX** 2 16 Oz. 53c

VERMONT MAID **SYRUP** 12 Oz. 27c

SWEET LIFE **PEANUT BUTTER** Creamy Smooth 12 Oz. Jar 33c

NESTLE'S **MORSELS** 1 1/2 Lb. Like Candy 6 Oz. Pkg. 21c

LIBBY'S **TOMATO JUICE** Full of Flavor Lg. 48 Oz. Can 28c

WE HAVE A FULL LINE OF **HALLOWEEN CANDIES**  
TIME FOR TRICK or TREAT

**GRAPEFRUIT JUICE** Sweet Life Big 48 Oz. Can 25c

**Bumble Bee White TUNA** In Oil 7 Oz. Can 37c

**CORNED BEEF HASH** Sweet Life 16 Oz. Can 29c

**EDUCATOR PIZZA CRACKERS** 9-oz. pkg. 33c

**NABISCO PREMIUM SALTINES** 16-pkg. 27c

**SUNSHINE MILCO GRAHAMS** 16-pkg. 47c

AMPLE PARKING AT FRONT, SIDE OR REAR OF BUILDING  
OPEN WED. TILL 8 P.M. — THURS. TILL 8:30 P.M. — FRI. TILL 9 P.M.

# FIRST FOOD

STORE OF MANCHESTER, INC.  
FREE DELIVERY — TEL. MI 3-8059

446 CENTER STREET

<b>GERBER'S STRAINED APPLE SAUCE</b> 4 for 41c	<b>LIPTON SOUP MIXES</b> Chicken Noodle... 3 for 37c
<b>GERBER'S STRAINED APPLE SAUCE</b> 4 for 41c	<b>LIPTON SOUP MIXES</b> Tomato Veg... 3 for 37c
<b>GERBER'S STRAINED APPLE SAUCE</b> 4 for 41c	<b>LIPTON SOUP MIXES</b> Beef Veg. or Onion 2 for 35c
<b>GERBER'S STRAINED APPLE SAUCE</b> 4 for 41c	<b>LIPTON SOUP MIXES</b> Green Pea 2 for 29c
<b>GERBER'S STRAINED APPLE SAUCE</b> 4 for 41c	<b>LIPTON SOUP MIXES</b> Beef Veg. or Onion 2 for 35c
<b>GERBER'S STRAINED APPLE SAUCE</b> 4 for 41c	<b>LIPTON SOUP MIXES</b> Green Pea 2 for 29c

## Rummage Sale

UNITED METHODIST CHURCH  
ROUTE 44A — BOLTON  
Saturday, Oct. 19 -- 9 A.M.

<b>ARMOUR TREET</b> 12 OZ. 43c	<b>WALDORF TOILET TISSUE</b> 4 For 35c
<b>ARMOUR TREET</b> 12 OZ. 43c	<b>WALDORF TOILET TISSUE</b> 4 For 35c
<b>ARMOUR TREET</b> 12 OZ. 43c	<b>WALDORF TOILET TISSUE</b> 4 For 35c
<b>ARMOUR TREET</b> 12 OZ. 43c	<b>WALDORF TOILET TISSUE</b> 4 For 35c
<b>ARMOUR TREET</b> 12 OZ. 43c	<b>WALDORF TOILET TISSUE</b> 4 For 35c

### Rec Board to Delay Decision Concerning Union School Use

The Advisory Recreation and Park Commission last night unanimously agreed to postpone action on the Union School use until next week.

Town Director Francis Mahoney said that the commission would not make a decision until after the school board meeting on Oct. 22.

The commission is divided on the issue, with some members favoring the school and others favoring the recreation department.

## Introductory Sale

# NEW PALMOLIVE

1 Bar Yours for only 1c when you buy 3 at regular price

NEW LATHER! NEW FRAGRANCE! NEW COLOR! NEW WRAPPER!

### Rec Officials Laud Actions On Swim Pool

At their monthly meeting last night, the Advisory Recreation and Park Commission lauded the actions of the Globe Hollow Improvement Association in its efforts to build a swimming pool.

The commission praised the association for its financial success and its ability to raise funds for the project.

The pool is expected to be completed by next summer.

### Ex-Local Woman Subject of Story

A Manchester High School graduate, Mrs. Donald Sirine, was the subject of a feature story recently in the White Plains, N. Y. Dispatch.

Mrs. Sirine was featured for her culinary abilities and for her free lunch work at an architectural firm.

The story highlighted her contributions to the community and her professional success.

### Sisterhood Plans Spaghetti Fiesta

A spaghetti fiesta, complete with entertainment and dancing, will be the first social event of the year sponsored by the Sisterhood of Temple Beth Shalom.

The event is scheduled for Saturday, Oct. 19, at 7:30 p. m. at the synagogue.

The menu includes spaghetti, meat sauce, and a variety of Italian dishes.

### Sickness Hits Schools; Asian Flu Not a Factor

School officials in three areas reported a decrease in absenteeism last week, indicating that the Asian flu is not a major factor in the current sickness hitting schools.

Officials noted that the number of sick children has decreased significantly compared to previous weeks.

The decrease is attributed to a combination of factors, including better hygiene and the natural progression of the flu season.

### Many Fine Booths At Products Show

What can you buy in Manchester? Everything from air conditioners to hand saws, from power tools to home appliances.

The Products Show is a great opportunity to see and purchase a wide variety of goods at special prices.

The show is held at the Bolton Armory and runs from Saturday, Oct. 19, to Sunday, Oct. 20.

## NOW YOU CAN GET MORE MONEY UP TO \$600 AT BENEFICIAL

TAKE 20 MONTHS TO PAY

Now you can get up to \$600 at Beneficial. Yes, now you can get more cash to pay off piled up bills or any other obligations and cut down your monthly payments over 20 months. A Beneficial Bill Clean-Up Loan. Make just one payment a month instead of several. And, you may even pay monthly payments over 20 months. For a prompt, friendly loan up to \$500, phone for One-Trip Service or come in.

400 MAIN ST., 2nd Floor, MANCHESTER

**A&P 98<sup>TH</sup> ANNIVERSARY SALE!**  
1859-1957

**PLENTY OF LOW**

You'll save more than ever during this big value event!

3<sup>rd</sup> Big Week!  
CHECK! COMPARE!  
SAVE AT A&P!

Third big week... welcome back for more! Here's another opportunity to get in on A&P's biggest value event of the year! Take advantage of this chance to stock up on everything you need and collect your share of exceptional savings this week end! Come see... you'll save!

- TOMATO PASTE PACKER'S 13 FOR 6 OZ CAN
- TOMATO SAUCE A&P BRAND 12 FOR 8 OZ CAN
- SLICED BEETS A&P 1 LB. 10 FOR CAN
- SCOTT TISSUE ROLL 8 FOR
- GREEN BEANS A&P 1 LB 1 OZ CAN 6 FOR FRENCH
- PRESERVES STRAWBERRY ANN PAGE JAR 3 FOR
- SANDWICH CRIMBS-Jane Parker Assorted, Filled Cookies PKG 5 FOR
- FACIAL TISSUES ANGEL PKG Soft, White OF 400 5 FOR

- Your Choice**
- 6 9 OZ PKGS A&P FROZEN GREEN BEANS FRENCH CUT
  - 8 1 LB 1 OZ CANS A&P WHOLE CORN
  - 10 10 1/2 OZ ANN PAGE TOMATO SOUP
  - 2 1 PT 8 OZ ANN PAGE SYRUP BLENDED
  - 5 10 OZ PKGS A&P FROZEN BABY LIMA BEANS
  - 8 15 1/4 OZ CANS PREP. SPAGHETTI
  - 24 5c SIZE ASS'T BOX CANDY BARS
  - 5 REGULAR SIZE SCOTT TOWELS

20c Less than Last Year... Lowest price in over 7 years!

**WEEK END SPECIAL!**

**Eight O'Clock Coffee**

3 LB BAG NOW ONLY **1.99**

1 LB BAG NOW ONLY **69c**

A&P leads the way again with this amazing Anniversary Special! Enjoy the same fine quality—the same mild, mellow flavor at a new low price!

IT'S CUSTOM GROUND RIGHT BEFORE YOUR EYES!

- Imperial Stainless Steel Kitchen Tools**  
only 99c each!  
WITH ANY PURCHASE
- Eight beautiful, matching pieces at less than 1/3 their normal value. The complete set includes the Ladle, Pot Fork, Spatula, Turner, Slotted Spoon, Masher, Frozen Food Saw, Basting Spoon... all featuring Wondra Wood Handles that will not burn, split or stain! A different utensil goes on sale each week. Start your set today!
- AP Super Markets**

- Spry-Crisco-Fluffo** JUST REDUCED! 3 LB CAN **97c**
- Our Own Tea Bags** 1<sup>st</sup> SALE! PKG OF 64 **48c**
- A&P Applesauce** JUST REDUCED! 2 1 LB CANS **25c**
- dexo** SHORTENING JUST REDUCED! 1 LB CAN **30c**
- 3 LB CAN** **80c**
- Cake Mixes** ANN PAGE-Honey Spice, Devil's Food, White, Yellow 4 1 LB 4 OZ PKGS **98c**
- Dried Peas** PACKER'S BRAND, YELLOW, SPLIT & WHOLE-GREEN, SPLIT & WHOLE 2 1 LB PKGS **25c**
- Light Bulbs** ELECTRIC-STOCK UP NOW! 40 WATT, 60 WATT, 75 WATT EACH **21c**
- Anti-Freeze** MARVEL BRAND PERMANENT TYPE GALLON **1.98**

**Sonny Clown** EACH **79c**

OUTSTANDING VALUE! AUTOMATIC RAY GUN

ANCHOR HOOKING-12 PIECE LUNCHEON SET **89c**

**Section 15 Webster's Dictionary**  
now on Sale—only 89c

—with any purchase at A&P. This is the final section of Webster's Unabridged, Assemble-It-Yourself—Edition. Two-part binder on sale next week!

**NEW LOW PRICE!**

**A&P Instant COFFEE**

2 OZ JAR **41c**

6 OZ JAR **1.05**

- Del Monte Sliced Beets** 2 1 LB JAR 35c
- Cut Rite Wax Paper** 120 FEET 25c
- Waldorf Toilet Tissue** 4 ROLL 35c
- Green Giant Peas** 2 1 LB 1 OZ CANS 39c
- Storlac** NONFAT DRY MILK 39c
- Sunshine Krispy Crackers** 1 LB 28c
- Nabisco Peanut Creme Patties** 4 1/2 OZ PKG 29c
- Swift's Sandwich Steaks** FROZEN PKG 83c
- A&P Salted Cashews** 4 1/2 OZ VACUUM TIN 43c
- Birds Eye Chicken Pies** 2 6 OZ PKGS 55c
- Hormel Spam** 1 1/2 LB CAN 45c
- Dirty Moore Beef Stew** 1 1/2 LB CAN 41c

- Health and Beauty Aids**
- TOOTH BRUSHES** PERSODENT - 2 REGULAR 69c BRUSHES - A 1.38 VALUE 2 FOR
- INSTANT LATHER** WILLIAMS - 2 REGULAR 79c CANS - A 1.58 VALUE 2 CANS
- BARBASOL SHAVE** Instant Lather - 2 Reg. 59c Cans - A 1.18 Value 2 CANS
- HAND CREAM** PACQUINS WITH 25c SILK 'N SATIN (PLUS TAX) BOTH FOR

- ZIPPY LIQUID STARCH 19c
- KLEENEX FACIAL TISSUES 27c
- GERBER'S BABY FOODS Strained 4 can 41c Junior 2 can 29c
- ORANGE JUICE LIBBY'S PROBLEY 2 4 OZ CANS 35c
- KARO SYRUP RED OR BLUE LABEL 16 LB 25c
- MAZOLA OIL FOR COOKING AND SALADS 34c
- MAZOLA OIL FOR COOKING AND SALADS 64c
- BOSCO CHOCOLATE FOOD DRINK 18 RANGE JAR 35c

**LOW PRICES!**

**A&P 98<sup>TH</sup> ANNIVERSARY SALE!**  
1859-1957

**Double YOUR MONEY BACK GUARANTEE!**

--on Super-Right Meats... One Price-As Advertised!

You get the most good eating... and your best money's worth when you buy "Super-Right" Meats because they're Quality Right, Prepared Right, Controlled Right and Priced Right... ONE PRICE... AS ADVERTISED! A&P is so sure you'll be thoroughly pleased with these superb meats that we offer you **DOUBLE-YOUR-MONEY - BACK** if you are not completely satisfied!

**CHUCK ROAST** Week End Special! **45c**  
BONE IN - BLOCK STYLE  
SUPER-RIGHT HEAVY CORN-FED STEER BEEF

**RIB ROAST** Week End Special! **59c**  
SUPER-RIGHT-HEAVY CORN-FED STEER BEEF  
7-INCH SHORT CUT  
No Short Ribs Included

**Ground Beef** ALL BEEF HAMBURG-LB 33c **3 LBS 1.00**

**Pork Chops** BEST CENTER CUTS LB **69c**

**Dried Beef** SUPER-RIGHT 4 OZ PKG **43c**

**FISH STICKS** FRIED CAPN JOHN'S 3 LARGE 10 OZ PKGS **98c**

**SHRIMP** MEDIUM SIZE QUICK-FROZEN DELICIOUS TREAT! LB **89c**

QUICK AND EASY TO PREPARE

**ANN PAGE Beans**

YOUR CHOICE OF 3 STYLES IN SAVORY SAUCE 9 1 LB CANS

**Skinless Frankforts** SUPER-RIGHT ALL MEAT LB **55c**

**Sausage Meat** SUPER-RIGHT PURE PORK LB **43c**

**Sliced Bacon** SUPER-RIGHT FANCY LB **65c**

**Canned Hams** ARMOUR'S STAR WHOLE 8-10 LBS BONELESS, SKINLESS LB **79c**

**Hallowe'en Candy**  
Just Arrived!  
COMPLETE ASSORTMENT INCLUDING "TRICK 'n TREAT" FEATURES PRICED REAL LOW!

It's Equal to the Best - Yet dexola Costs You Less!

**A&P's Own All-Purpose Oil**

Highly refined... specially selected pure vegetable oil for baking, frying and salad making.

**dexola**

PINT 29c QUART 55c GALLON CAN 1.99

FLORIDA, SWEET AND JUICY-NONE PRICED HIGHER

**ORANGES** 3 GOOD SIZE DOZ **98c**

**Spinach** READY-TO-USE LGE 1 LB 4 OZ CELLO BAG 39c

**Cabbage** FRESH CRISP 4 LBS **15c**

Today the world's best cheese comes from the good old U.S.A. See the magnificent assortment waiting for you at your spottless A&P Dairy Center where prices are always kind to your budget!

**Ched-O-Bit** For every cheese use 8 oz pkg 25c **79c**

**Cheese FOOD** 2 LB **79c**

**ANN PAGE PRESERVES**

YOUR CHOICE: PEACH - PINEAPPLE - APRICOT

1 LB JAR **31c**

2 LB JAR **55c**

GRAND EATING-NONE PRICED HIGHER

**APPLES** Cortland 4 LB **39c**

**CAULIFLOWER** IDEAL FOR COOKING NONE PRICED HIGHER 4 LB BAG **29c**

**WALNUTS** REGALO BRAND IN SHELL 1 LB Pkg 2 FOR **98c**

**BUTTER** SILVERBROOK-PRICE REDUCED! LB PRINT **69c**

**Sliced Swiss Cheese** DOMESTIC NUT-SWEET FLAVOR LB **65c**

**Sharp Cheddar Cheese** AGED TANGY LB **59c**

**Sliced Cheese** Mel-O-Bit Partly-Prepared Process Handy Top Sandwiches 6 OZ PKG **25c**

- ANN PAGE MACARONI OR SPAGHETTI 3 lb pkg 49c 1 LB PKG **19c**
- Ann Page Ketchup 2 14 OZ BOTS **35c**
- Ann Page Mayonnaise DELICATE MIXTURE 33c 59c
- Sparkle Gelatin ANN PAGE ASSORTED FLAVORS 4 PKGS **29c**
- CLOXOX A 4 IN 1 PRODUCT 19c
- LIMIT LIQUID STARCH 19c
- KASCO DOG MEAL SALES OFFER 2 1 1/2 LB 25c 1 1/2 LB 1.05
- BAB-O CLEANSER NOW CONTAINS BLEACH 2 16 OZ PALS **29c**
- LIBBY'S FROZEN FOODS Fancy Peas 2 15 OZ PALS **35c** Vegetables MIXED 16 OZ PALS **21c** Cauliflower 16 OZ PALS **25c** Chopped Broccoli 16 OZ PALS **21c**
- BIRDS EYE FROZEN FOODS Green Beans 16 OZ PALS **21c** Wax Beans CUT 2 16 OZ PALS **43c** Fancy Peas 2 16 OZ PALS **35c** Vegetables MIXED 2 16 OZ PALS **21c**







### Sense and Nonsense

Customer—What flavors of ice cream do you have?  
 Husband—Yes, my dear, a great variety.  
 Wife—Never mind about the flavors. Can he play?  
 Customer—You got laryngitis?  
 Waitress—No, (with an effort) just vanilla, chocolate, and strawberry.

A well-known orthopedic surgeon was being conducted through a hospital ward on a trip of inspection. His host showed him a patient and said:  
 Doctor—What's wrong with him?  
 Nurse—Well, I declare! He's got a broken leg.  
 Doctor—How long has it been broken?  
 Nurse—Since he was born.

Music I have on my radio. Drama that can't be topped. News and the weather, but never the time when our clock has stopped.

—Mrs. Edmund L. Smith.

A small boy called "information" to ask the number of the local movie house. The operator told him and added:  
 Operator—You will find that number in your directory.  
 Small Boy— I know that, but I'm standing on the book!

### CARNIVAL



### Vegetable Garden

Answer to Previous Puzzle

1	2	3	4	5	6	7	8	9	10	11	12	13	14	15	16	17	18	19	20	21	22	23	24	25	26	27	28	29	30	31	32	33	34	35	36	37	38	39	40	41	42	43	44	45	46	47	48	49	50	51	52	53	54	55	56	57	58	59	60	61	62	63	64	65	66	67	68	69	70	71	72	73	74	75	76	77	78	79	80	81	82	83	84	85	86	87	88	89	90	91	92	93	94	95	96	97	98	99	100
---	---	---	---	---	---	---	---	---	----	----	----	----	----	----	----	----	----	----	----	----	----	----	----	----	----	----	----	----	----	----	----	----	----	----	----	----	----	----	----	----	----	----	----	----	----	----	----	----	----	----	----	----	----	----	----	----	----	----	----	----	----	----	----	----	----	----	----	----	----	----	----	----	----	----	----	----	----	----	----	----	----	----	----	----	----	----	----	----	----	----	----	----	----	----	----	----	----	----	-----



### Rockville-Vernon

#### Brooks Seeks Court Order To Stop Town Police Force

Vernon, Oct. 17 (Special)—The town of Rockville-Vernon is being challenged by Abraham L. (Abe) Brooks, in a superior court action now in preparation.

Edwin M. Lavitt, representing Brooks, will seek the signature of Judge Philip P. Pastore today or tomorrow on an order to show cause why an injunction should not be issued preventing town officials from expending funds for rural police protection.

Brooks, a taxpayer in the city as well as in the town, and former city treasurer, revealed the action today as a means of relieving city taxpayers from the burden of supporting two police departments, one in the city and one in the Five District in Rural Vernon.

First Move Targeted

Before the town budget was approved last year, Brooks moved to refer the \$17,500 appropriation for rural police protection back to the Board of Finance for that body to increase the amount to meet the police protection in the entire town, including the city.

Brooks said this action would eliminate the many inequities in town city government here.

However, his motion was defeated after it was explained that Finance Board cannot increase an appropriation, and the city charter would not permit a town police department to have jurisdiction over the city.

Previously, it has been suggested that the Fire District set up a police department but objects say this would only duplicate the town's police force.

Brooks' action is being brought against the town's three selectmen and the town treasurer. He is a member of the Board of Education, assistant prosecutor of the city courts and vice president and secretary of American Dyeing Co.

Edmund P. Dwyer has already been named by the selectmen as the town's first policeman and has been authorized to interview applicants to assist him. The selectmen have accepted a bid for the new cruiser for the County Superior Court on Nov. 2.

Charles Hedges Post

Burr C. Carter, driver education teacher at Rockville High School, has resigned the position effective in November. Sup. of Schools Raymond E. Ramoth announced today.

Carter, who has been assisting in athletics during his year at the high school, was slated to become baseball coach in the spring. Although the appointment had not yet been announced, he coached Junior varsity teams in soccer and basketball last year.

Carter, a graduate of the University of Connecticut, has accepted a position in West Hartford schools as driver-education instructor. He taught in Maple St. before leaving for service in the armed forces and returned to the high school. His replacement has not yet been secured.

Fantek Gets Constable Post

tie for constable in the Oct. 7 town election was settled last night when Howard Luffman withdrew his name, leaving the young policeman, Nicholas Pawluk. The action saved the town the expense of another election to break the tie. The vote was 11-11.

Luffman, who had been serving as moderator at the election, today announced he had named Joseph Bellotti as his replacement.

Ann, an unprecedented goal of \$10,000 has been set for the drive.

Mrs. Edward Newmarker, president, announced today.

The increased goal has been set to meet rising costs for salaries and supplies.

Following a plan established last year, the drive will be conducted into a 1-day, all-out effort, Bellotti said.

Membership in the association was set several years ago at \$2 a year. The Board of Directors estimated that if everyone who is able contributes the full amount, the goal can easily be met. However, since some people may not be able to give \$2, others are urged to increase their contributions to balance a possible deficit.

### Gorman Red Cross Chairman

#### Chapter Notes Anniversary

The Manchester Chapter of the American Red Cross Chapter of the American Red Cross celebrated the 40th anniversary of its founding with a dinner at Caver's Restaurant last night.

Just before the dinner the board of directors held its bi-monthly meeting at the home of Mrs. Gorman.

The Rev. Clifford O. Simpson gave the invocation and the Rev. Herman Heck, this year's chairman, acted as toastmaster for the affair.

John F. Clifford, O. Simpson gave the invocation and the Rev. Herman Heck, this year's chairman, acted as toastmaster for the affair.

Four of the eight living charter members of the Manchester Chapter of the American Red Cross were present at the dinner. Fred Bendall, C. Elmore Watkins, Herbert B. House and Scott Simon helped found the chapter in 1917. Other living charter members unable to attend the meeting are Mrs. Albert T. Dewey, Mrs. C. H. Burr, Lucius and Edward J. Hill. (Herald Photo by O'Rourke).

### Senators Deny GOP to Benefit by Litter Rock

(Continued from Page One)

with Alcorn that Republicans probably would benefit from the situation. But he said he is positive that Eisenhower's decision to use the veto was not based on the basis of measuring any political effect.

"They will be a byproduct and may switch some votes from Democrats to Republicans in the big metropolitan areas of the North where Negroes are concentrated," he said.

Sen. Billie (D-New.) said the whole issue of Civil Rights "transcends party politics and I personally feel that this issue has been embedded in politics too strongly."

"Our western viewpoint is that this is a delicate and sensitive area and that it is not desirable to permit these rights to be distributed. That's the issue."

Sen. Wiley (R-Wis.) said that "only the future will determine what effect Little Rock will have on the thoughtful people of the South."

"Every American citizen, no matter what the color of his skin, has rights as a citizen of his state and a citizen of the federal government," he said. "We cannot permit these rights to be distributed. That's the issue."

Senators who speak to make political capital out of this grave situation would be better off if they remained in the background," he added.

### ABC APPLIANCE REPAIRS

21 MAPLE ST., MANCHESTER—MI 9-1575

Under NEW Management!

Expert Repairing on All Small Appliances: STOVES, REFRIGERATORS, WASHERS, DRYERS, TOASTERS, GRILLERS, ALSO ALL MAKES OF SEWING MACHINES. Work Guaranteed—Open Daily—Closed Mondays.

ABC APPLIANCE  
 21 MAPLE ST., MANCHESTER  
 Special Sale At Cost  
 THURSDAY NIGHT ONLY, 6-9 O'CLOCK  
 One Maytag 140 Automatic—One Maytag Highlander—One Maytag 140 Dryer

Modernize YOUR HEATING SYSTEM

CONVERT TO OIL HEAT NOW!

Call Us! We'll Be Pleased To Submit An Estimate.

ROTARY or PRESSURE BURNERS COMPLETE HEATING

STEAM—HOTWATER—WARM AIR—AIR CONDITIONING

NEW! NEW! NEW!  
 HOT WATER HEATER OPERATING ON NO. 2 FUEL OIL

Hotwater as you like it! Guaranteed and at the most economical cost to you.

"OIL HEAT IS CLEAN HEAT!"

FOGARTY BROTHERS, INC.  
 319 BROAD STREET—MI 9-4539

### Police Arrests

Paul R. Leonard, 37, of Surfside, was arrested by State Police and charged with allowing the operation of a commercial motor vehicle without rear fender caps. Leonard is the owner of a lumber truck stopped on Toland Pike, Tuesday by a State Policeman. The driver was Arthur Plouffe, 37, of Hartford. Leonard is scheduled to appear in Town Court on Oct. 22.

Gloria J. Bassett, 17, of 82 Coleman Rd., was arrested yesterday on a warrant issued by Prosecutor John F. Hartley, charging her with breach of the peace. She is scheduled to appear in court Monday.

Kurt Lieber, 45, of New York City was arrested yesterday for failure to pay a parking ticket dated June 14. Lieber posted a \$5 bond and the case will be heard in Town Court Saturday.

First American to enter Paris in the liberation of 1944 was Sergeant Lawrence R. Kelly.

## Our Famous QUALITY

IS THE TALK OF THE TOWN!

SHURFINE FOOD FESTIVAL

6-OZ. JAR INSTANT COFFEE	99c
COLOSSAL PEAS 4-1-Lb. Cans	69c
CUT GREEN BEANS 4-1-Lb. Cans	69c
SLICED BEETS 4-1-Lb. Cans	49c
21-OZ. CANS SLICED YELLOW CLING PEACHES	2 Cans 59c
30-OZ. CANS FRUIT COCKTAIL	2 Cans 75c
28-OZ. CANS—OVEN BAKED BEANS	2 Cans 45c
GRAPE JELLY	3 Jars 59c
POUND CANS APPLESAUCE	2 Cans 31c
2-LB. CANS GRAPEFRUIT SECTIONS	2 Cans 35c
EVAPORATED MILK	6 Cans 79c
Pillsbury's Best FLOUR 5-Lb. Bags	53c
NABSCO COCOA GRAHAMS	Box 39c
EDUCATOR FROSTED FRUIT and NUT COOKIES	Plg. 35c

FRESH HAMS 55c  
 SPARERIBS 57c  
 NATIVE FOWL 33c  
 BONELESS BRISKET CORNED BEEF 65c  
 BELTSVILLE TURKEYS 49c  
 FRESH BULK SAUERKRAUT 2 lbs. 29c

FRUITS AND VEGETABLES

FLORIDA JUICE ORANGES 49c  
 FANCY MOUNTAIN APPLES 39c  
 BRUSSELS SPROUTS 39c

BURSACK'S SUPER MARKET

"THE GRAND NATIONAL"

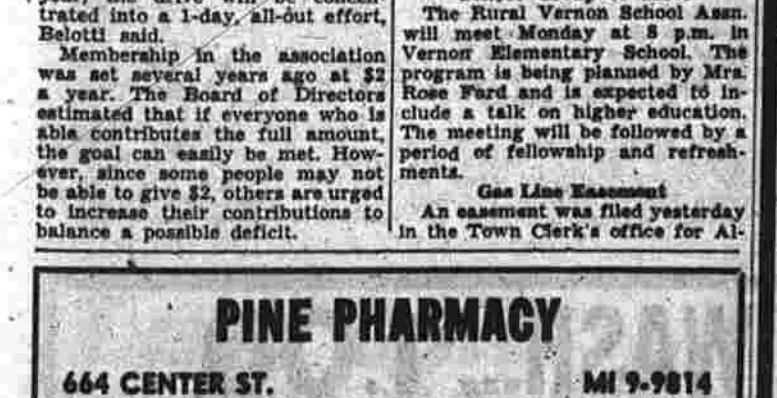
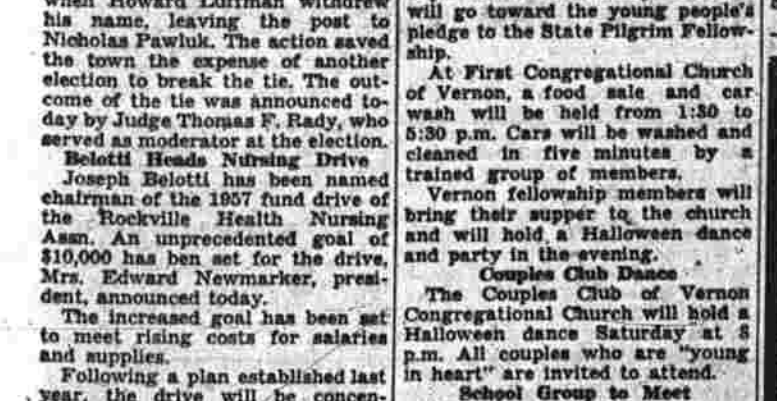
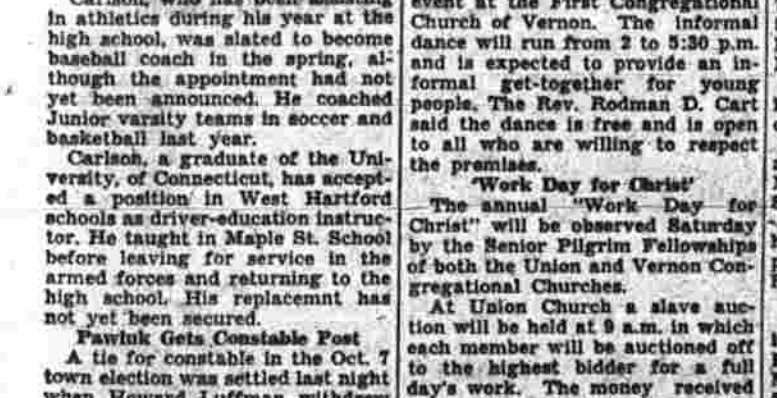
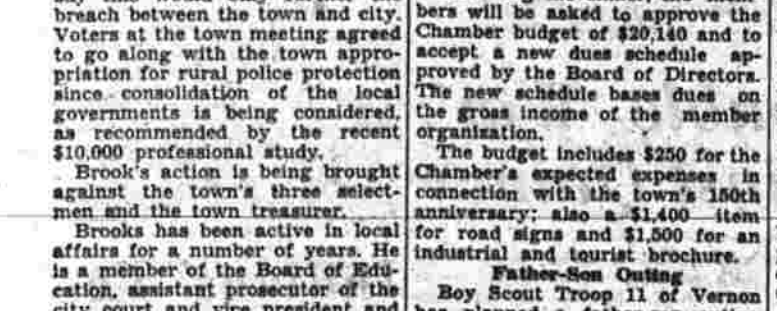
HFD. ROAD COR. MCKEE ST. PHONE MI 9-8831

"NEVER A PARKING PROBLEM"

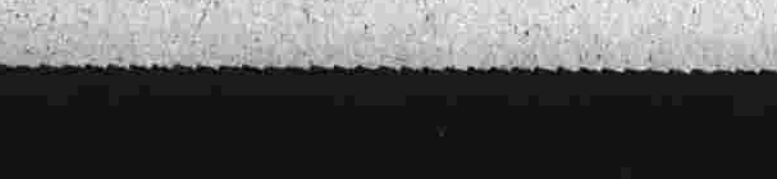
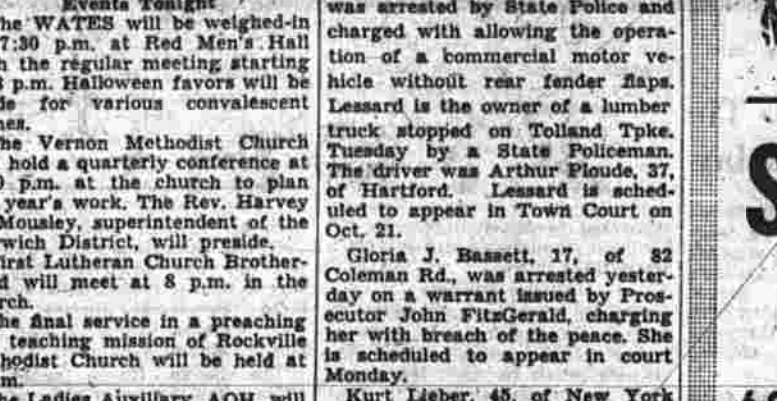
OPEN THURS. UNTIL 9 P.M. FRIDAY UNTIL 9 P.M.

We Give Customers Profit-Sharing Stamps

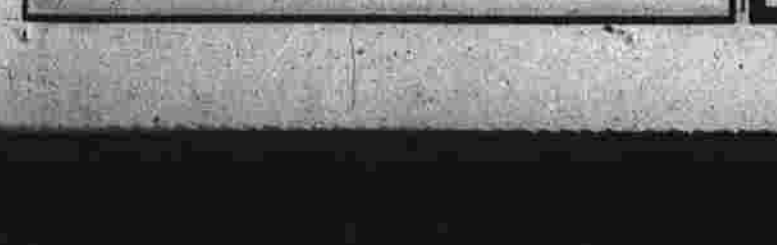
### Priscilla's Pop



### By Al Capp and Bob Lubbers



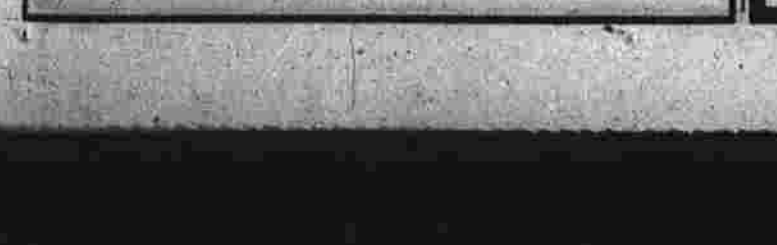
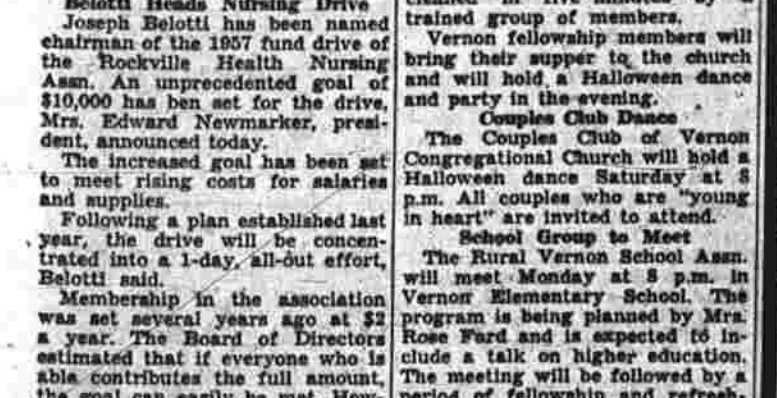
### By Ralston Jones and Frank Ridgeway



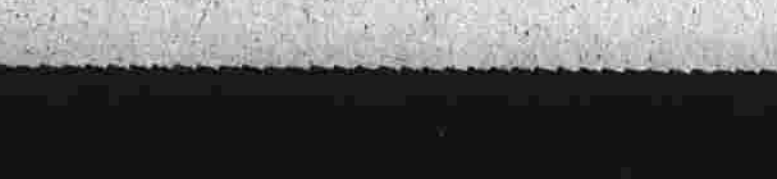
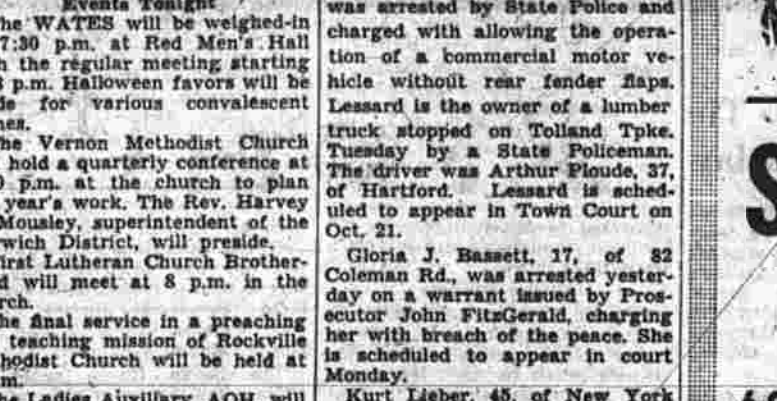
### By Roy Crane



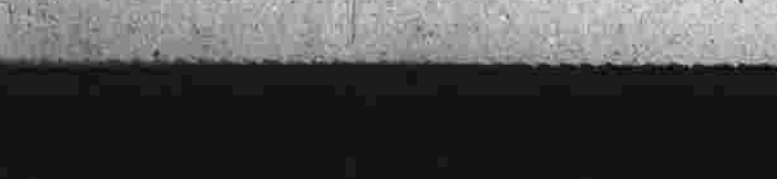
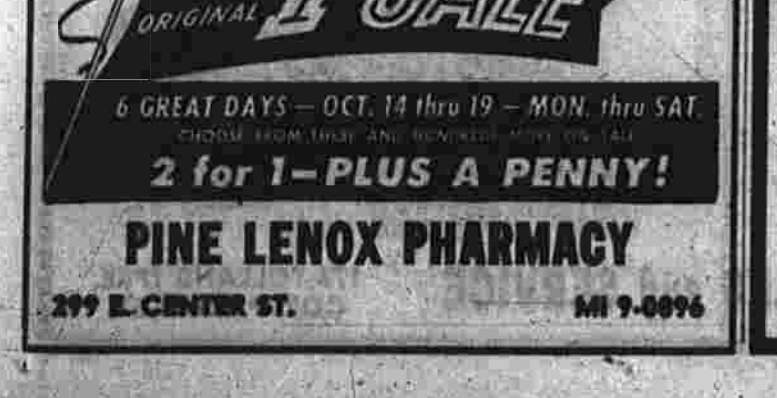
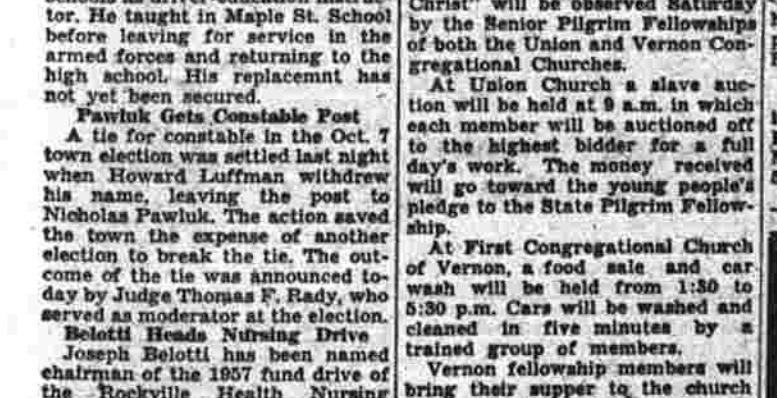
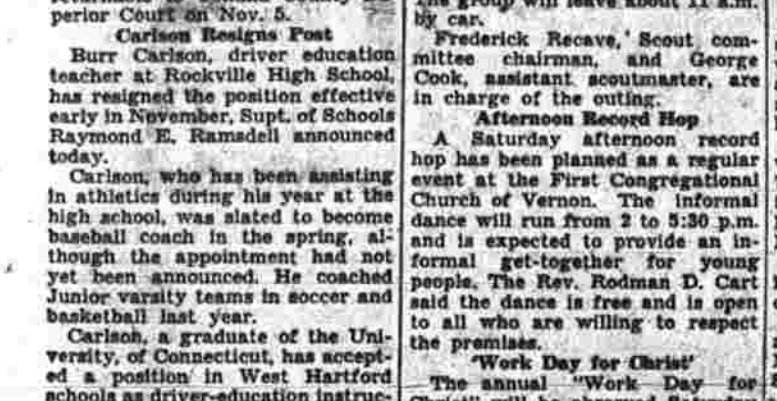
### By Lank Leonard



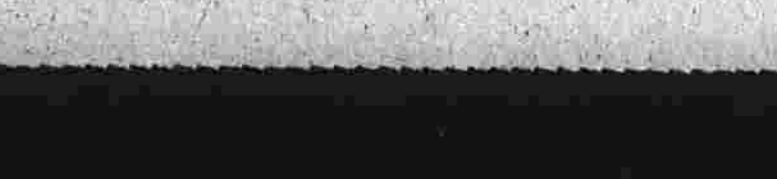
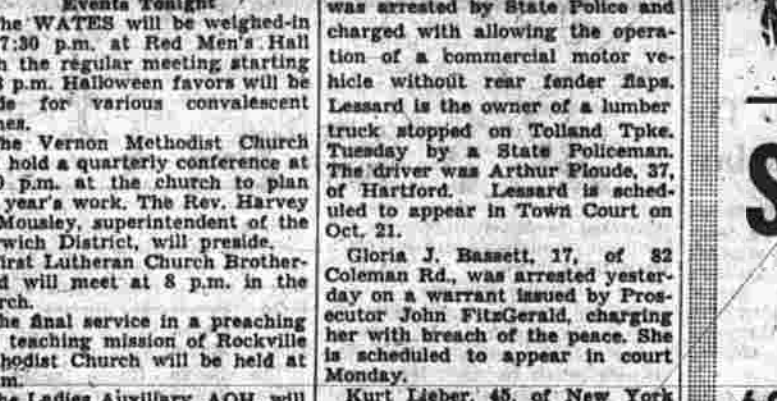
### By Dick Cavalli



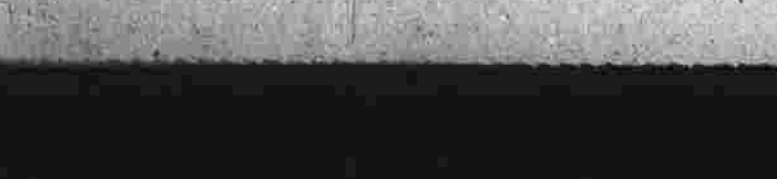
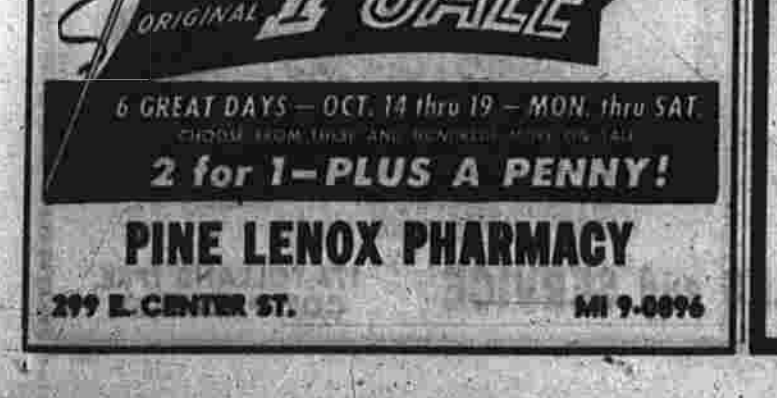
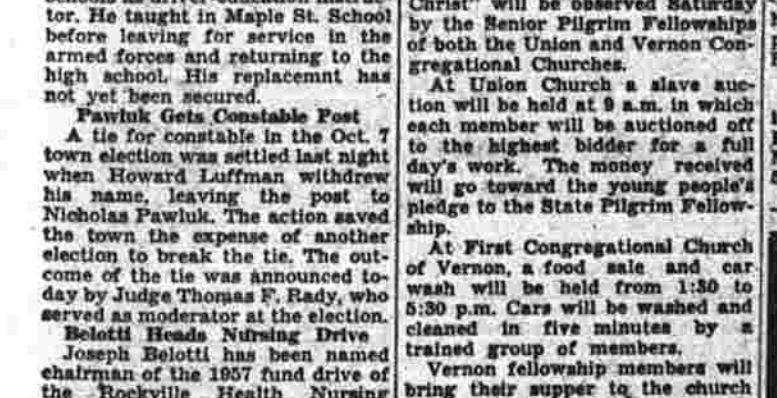
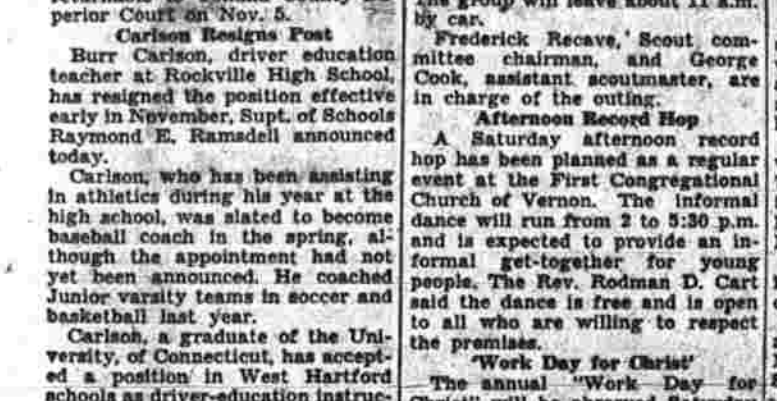
### By Dick Turner



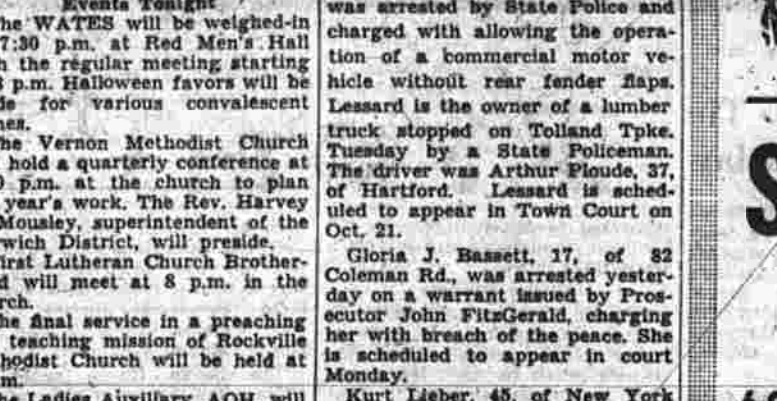
### By Wilson Scroggs



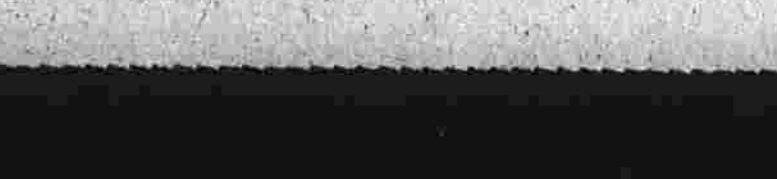
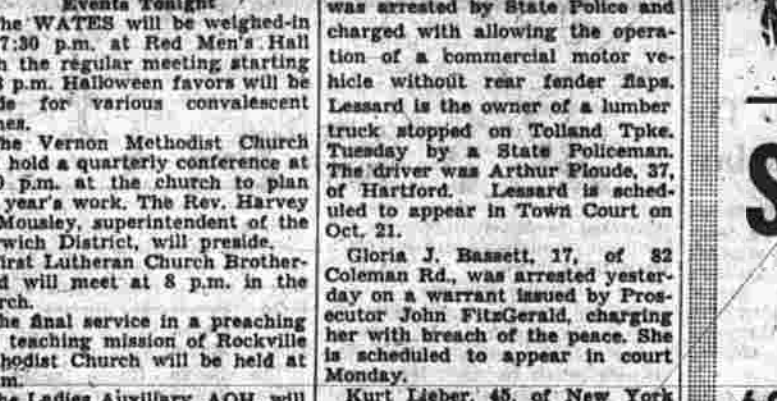
### By Ray Gotto



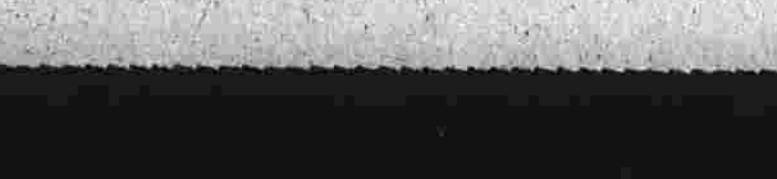
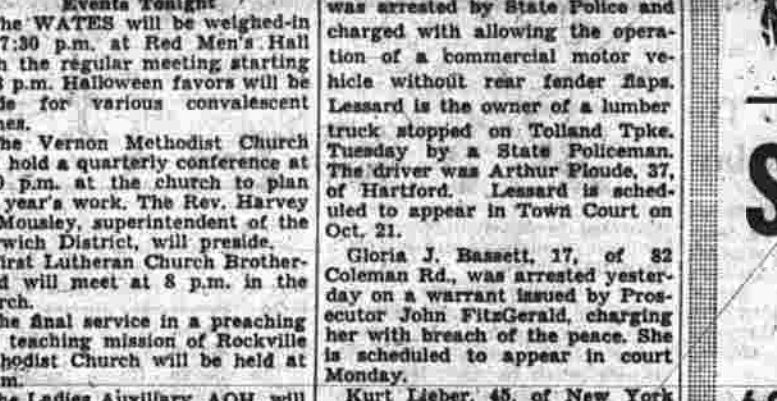
### By V. T. Hamlin



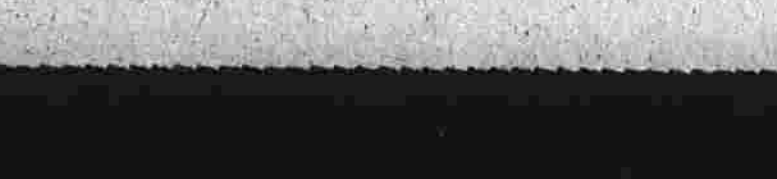
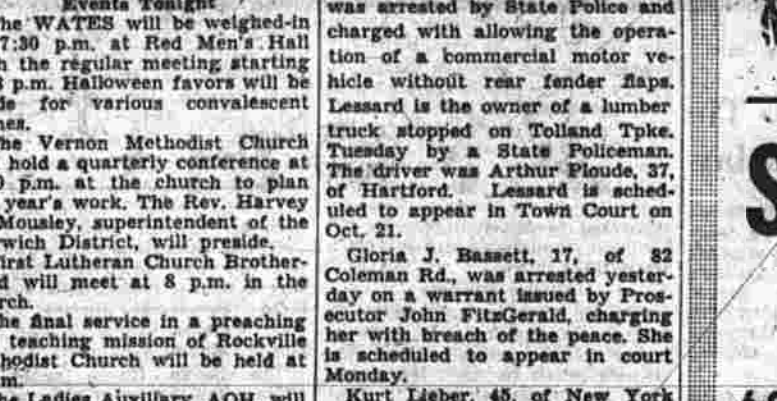
### By Peter Hoffman



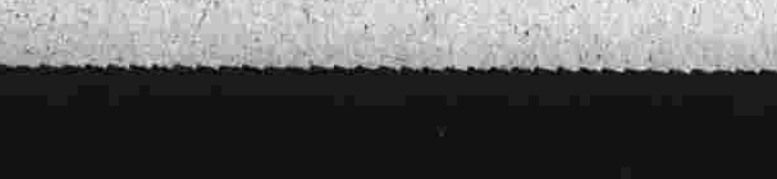
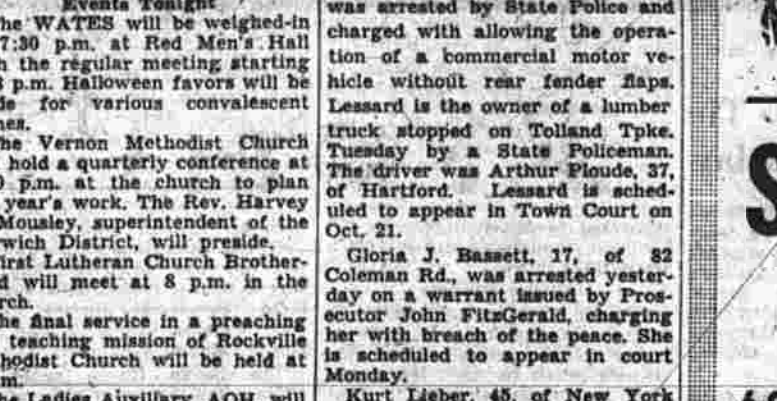
### By Leslie Turner



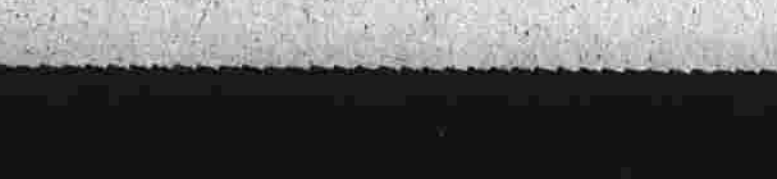
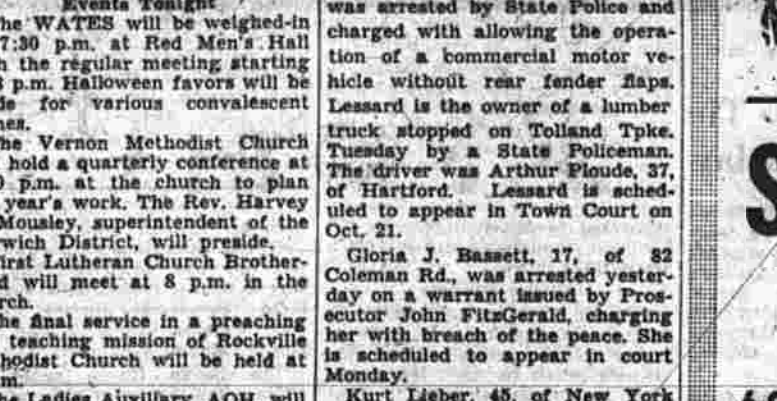
### By Dick Cavalli



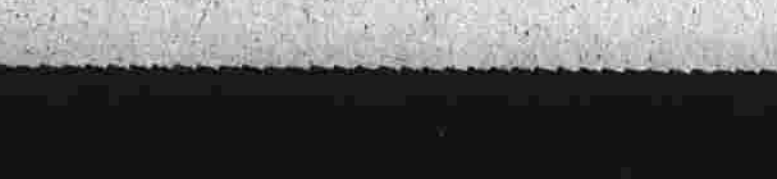
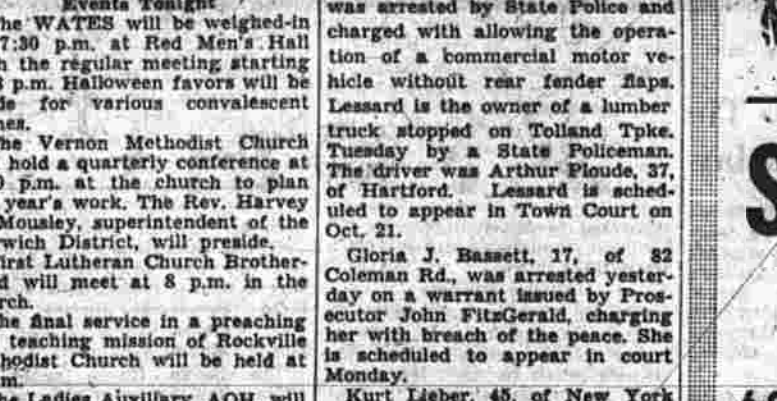
### By Wilson Scroggs



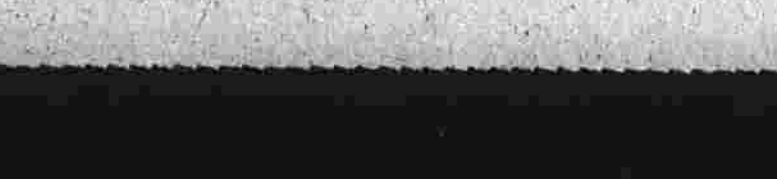
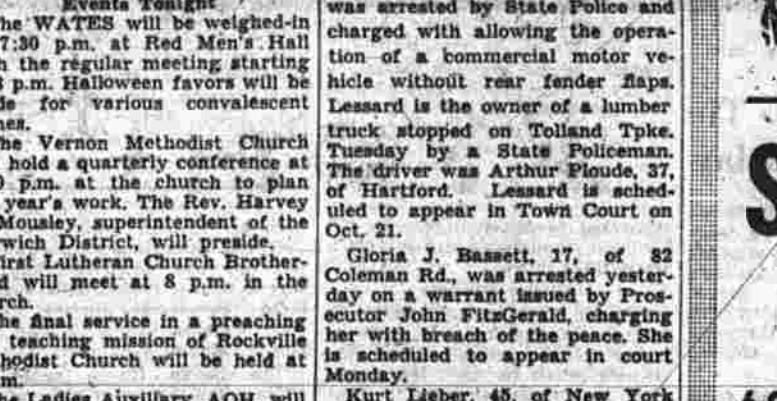
### By Dick Cavalli



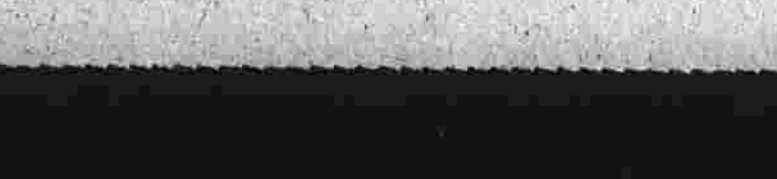
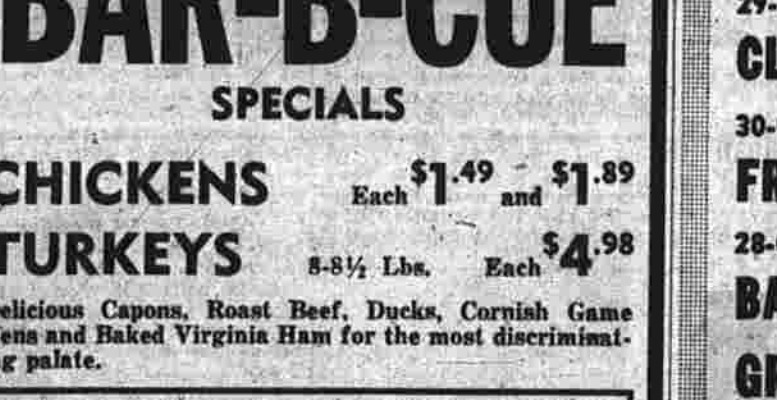
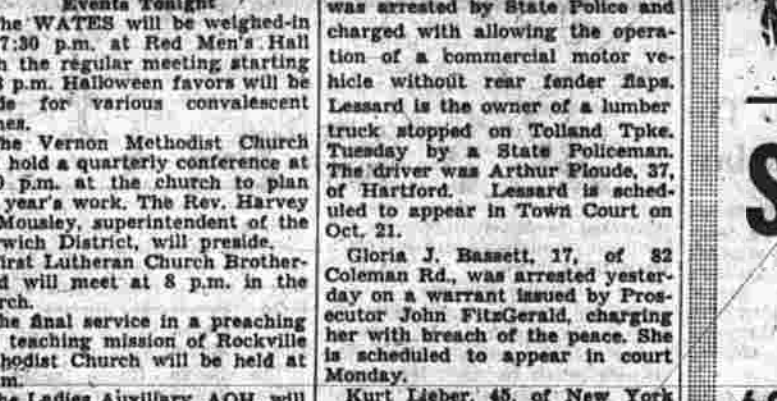
### By Dick Cavalli



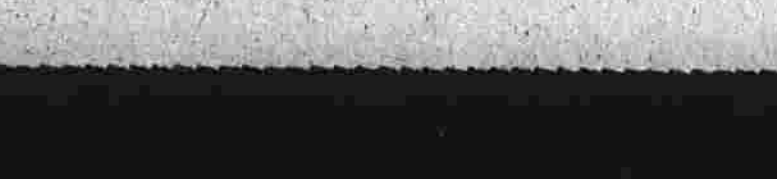
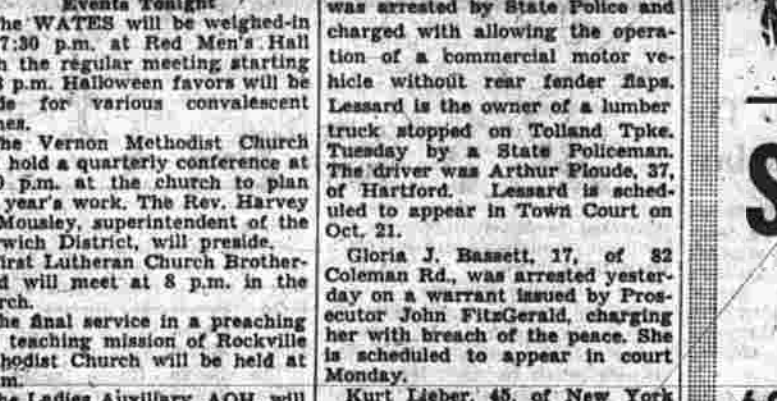
### By Dick Cavalli



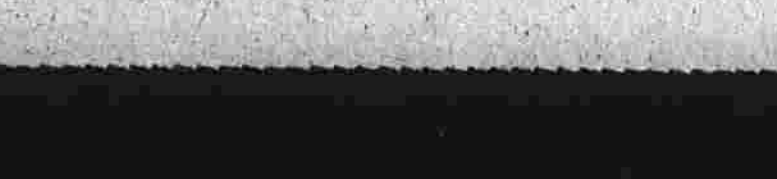
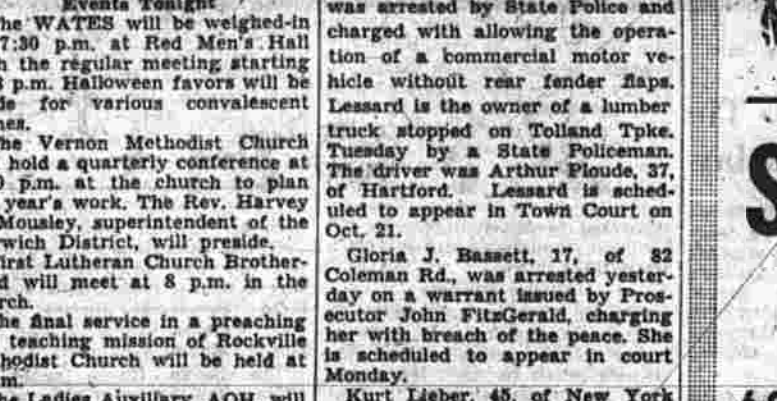
### By Dick Cavalli



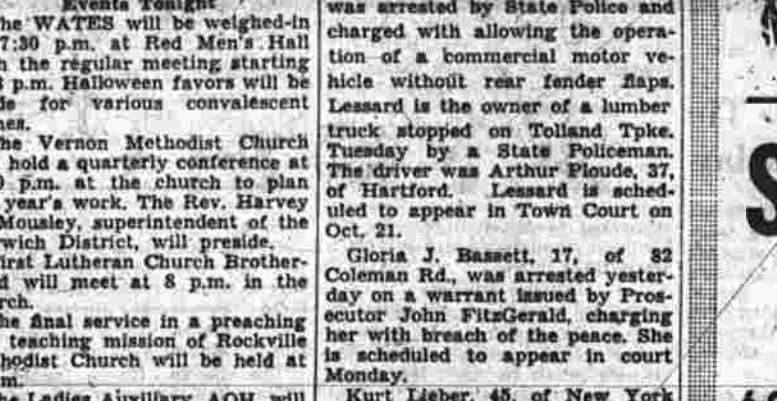
### By Dick Cavalli



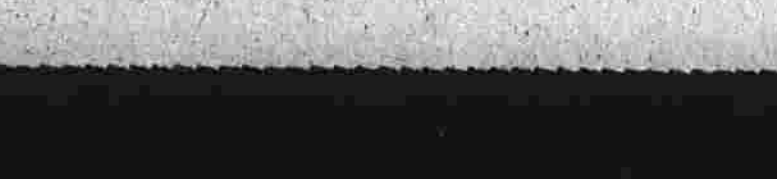
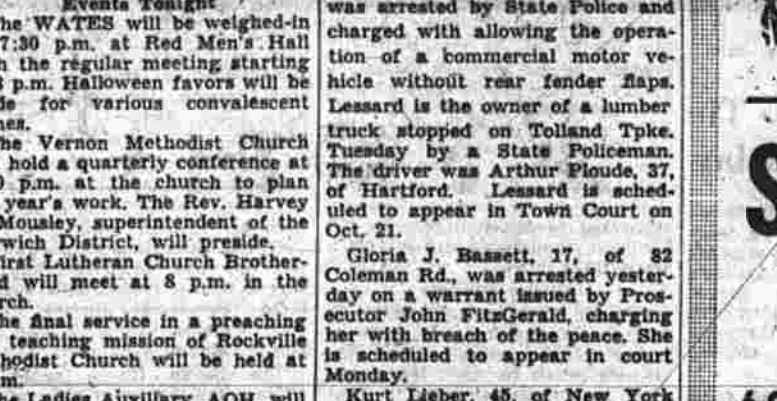
### By Dick Cavalli



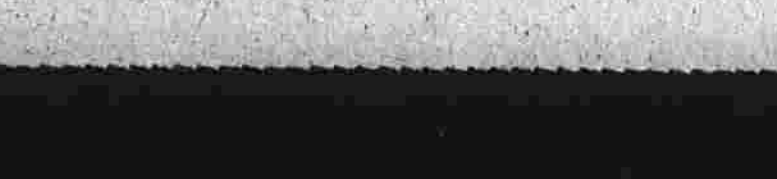
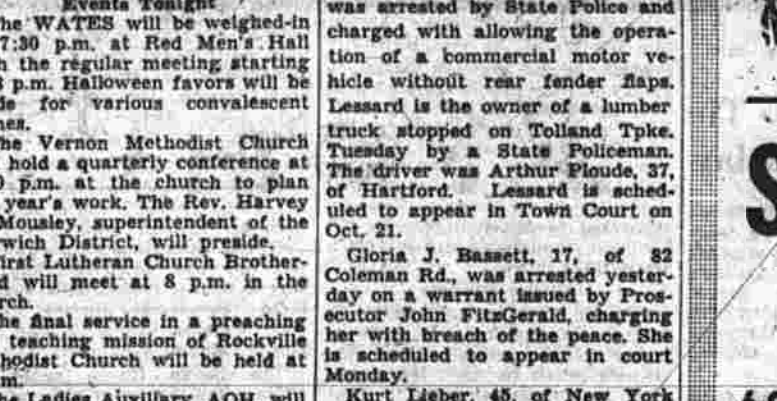
### By Dick Cavalli



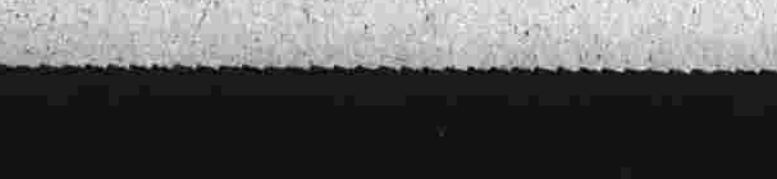
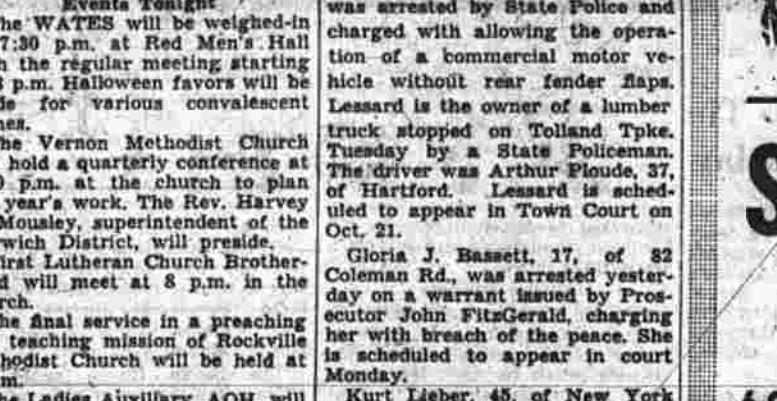
### By Dick Cavalli



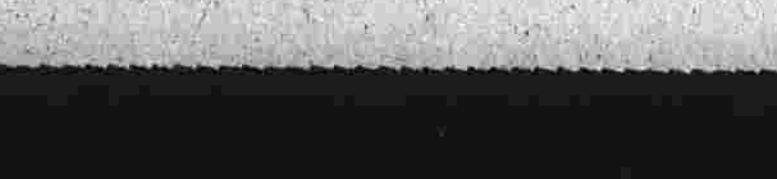
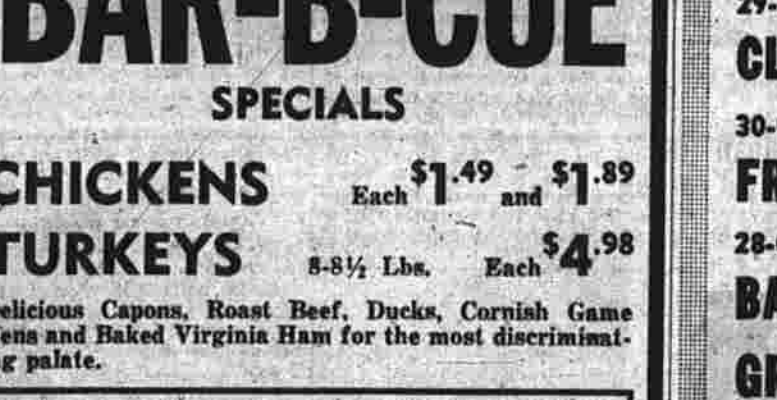
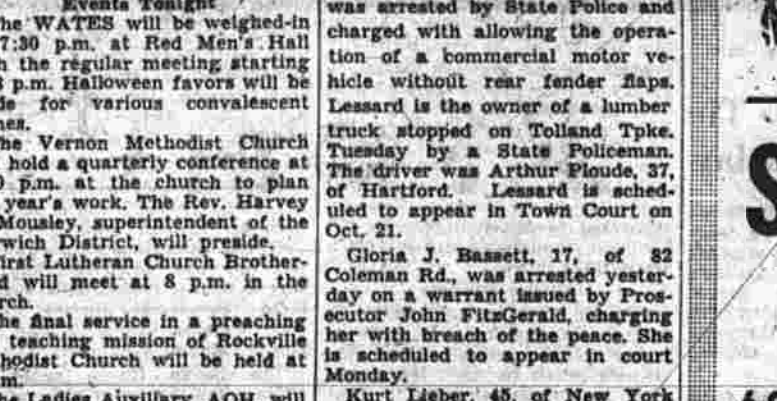
### By Dick Cavalli



### By Dick Cavalli



### By Dick Cavalli



# Rigney, with New Pact, Promises Changes Next Season

## Two Players Sure of Jobs Manager Says

San Francisco, Oct. 17 (AP)—Bill Rigney, retained as manager of the San Francisco Giants for two years, says California may see an all-time entirely different club than the one that played at the Polo Grounds in New York.

The only two players sure to be in the lineup—"untouchables" Rigney calls them—are outfielder Willie Mays and outfielder Johnny Antonelli.

Horace Stoneham signed Rigney, practically a local product, to a two-year contract. Rigney, 35, lives across San Francisco Bay from Mays and played ball for the now-defunct Oakland Oaks of the Pacific Coast League before joining the Giants.

Rigney said Mays should be better than any infielder at major league level. He said Mays should be better than any infielder at major league level. He said Mays should be better than any infielder at major league level.

The Giants announced the purchase from World Champion Milwaukee Braves of outfielder Willie Mays and infielder Johnny Antonelli.

## DeWitt Likely Successor To Hank with Indians

Cleveland, Oct. 17 (AP)—Bill DeWitt of St. Louis, a man with 28 years of baseball background, seems to be the inside track to become the next general manager of the Cleveland Indians. The Indians' directors fired Hank Greenberg yesterday without any mention of who might succeed him.

The 55-year-old DeWitt, who was with the St. Louis Cardinals and the St. Louis Browns and the New York Yankees at various times, says he is interested in the Cleveland job, although he hasn't been approached.

"I'm very happy in my present position," he said. "But a fellow's always willing to improve himself. I think I'm in a position to be an assistant manager of the major league club for a while."

Wanted No. 1 DeWitt is a former player and coach. He was with the St. Louis Browns and the New York Yankees at various times. He was with the St. Louis Browns and the New York Yankees at various times.

DeWitt is a former player and coach. He was with the St. Louis Browns and the New York Yankees at various times. He was with the St. Louis Browns and the New York Yankees at various times.

## Double Barreled Dixie Standouts

Clendaniel Paces High To Victory

Clendaniel (14) 16.00; 2. Little (14) 14.22; 3. Martelli (14) 14.32; 4. Ryan (14) 14.83; 5. Botta (14) 15.01; 6. Wash (14) 15.04; 7. Griffin (14) 15.11; 8. Kocik (14) 15.12; 9. Foster (14) 15.13; 10. Bennett (14) 15.18.

Clendaniel (14) 16.00; 2. Little (14) 14.22; 3. Martelli (14) 14.32; 4. Ryan (14) 14.83; 5. Botta (14) 15.01; 6. Wash (14) 15.04; 7. Griffin (14) 15.11; 8. Kocik (14) 15.12; 9. Foster (14) 15.13; 10. Bennett (14) 15.18.

Clendaniel (14) 16.00; 2. Little (14) 14.22; 3. Martelli (14) 14.32; 4. Ryan (14) 14.83; 5. Botta (14) 15.01; 6. Wash (14) 15.04; 7. Griffin (14) 15.11; 8. Kocik (14) 15.12; 9. Foster (14) 15.13; 10. Bennett (14) 15.18.

## Starting Point Changed for Turkey Day Race

### Main St. Area Near Old High School Named

By EARL YOST  
Starting and finishing line for the 21st running of the Five Mile Road Race in Manchester on Thanksgiving morning has been altered. This announcement was made today by General Chairman William Forest, No. 144, Trustees of Lebanon.

The race will start on Main St. at the old high school building and the finishing line will be at the old high school building. The race will start on Main St. at the old high school building and the finishing line will be at the old high school building.

The race will start on Main St. at the old high school building and the finishing line will be at the old high school building. The race will start on Main St. at the old high school building and the finishing line will be at the old high school building.

The race will start on Main St. at the old high school building and the finishing line will be at the old high school building. The race will start on Main St. at the old high school building and the finishing line will be at the old high school building.

The race will start on Main St. at the old high school building and the finishing line will be at the old high school building. The race will start on Main St. at the old high school building and the finishing line will be at the old high school building.

## Ninth Slugging Crown Annexed by Williams

New York, Oct. 17 (AP)—Thumpin' Ted Williams, an old hand at winning American League slugging championships, grabbed his ninth crown in 1957 with a lustrous .731 average.

Williams, who has won slugging championships in 1941, 1942, 1943, 1946, 1947, 1948, 1953, 1954, 1955, 1956, 1957, 1958, 1959, 1960, 1961, 1962, 1963, 1964, 1965, 1966, 1967, 1968, 1969, 1970, 1971, 1972, 1973, 1974, 1975, 1976, 1977, 1978, 1979, 1980, 1981, 1982, 1983, 1984, 1985, 1986, 1987, 1988, 1989, 1990, 1991, 1992, 1993, 1994, 1995, 1996, 1997, 1998, 1999, 2000, 2001, 2002, 2003, 2004, 2005, 2006, 2007, 2008, 2009, 2010, 2011, 2012, 2013, 2014, 2015, 2016, 2017, 2018, 2019, 2020, 2021, 2022, 2023, 2024, 2025, 2026, 2027, 2028, 2029, 2030, 2031, 2032, 2033, 2034, 2035, 2036, 2037, 2038, 2039, 2040, 2041, 2042, 2043, 2044, 2045, 2046, 2047, 2048, 2049, 2050, 2051, 2052, 2053, 2054, 2055, 2056, 2057, 2058, 2059, 2060, 2061, 2062, 2063, 2064, 2065, 2066, 2067, 2068, 2069, 2070, 2071, 2072, 2073, 2074, 2075, 2076, 2077, 2078, 2079, 2080, 2081, 2082, 2083, 2084, 2085, 2086, 2087, 2088, 2089, 2090, 2091, 2092, 2093, 2094, 2095, 2096, 2097, 2098, 2099, 2100, 2101, 2102, 2103, 2104, 2105, 2106, 2107, 2108, 2109, 2110, 2111, 2112, 2113, 2114, 2115, 2116, 2117, 2118, 2119, 2120, 2121, 2122, 2123, 2124, 2125, 2126, 2127, 2128, 2129, 2130, 2131, 2132, 2133, 2134, 2135, 2136, 2137, 2138, 2139, 2140, 2141, 2142, 2143, 2144, 2145, 2146, 2147, 2148, 2149, 2150, 2151, 2152, 2153, 2154, 2155, 2156, 2157, 2158, 2159, 2160, 2161, 2162, 2163, 2164, 2165, 2166, 2167, 2168, 2169, 2170, 2171, 2172, 2173, 2174, 2175, 2176, 2177, 2178, 2179, 2180, 2181, 2182, 2183, 2184, 2185, 2186, 2187, 2188, 2189, 2190, 2191, 2192, 2193, 2194, 2195, 2196, 2197, 2198, 2199, 2200, 2201, 2202, 2203, 2204, 2205, 2206, 2207, 2208, 2209, 2210, 2211, 2212, 2213, 2214, 2215, 2216, 2217, 2218, 2219, 2220, 2221, 2222, 2223, 2224, 2225, 2226, 2227, 2228, 2229, 2230, 2231, 2232, 2233, 2234, 2235, 2236, 2237, 2238, 2239, 2240, 2241, 2242, 2243, 2244, 2245, 2246, 2247, 2248, 2249, 2250, 2251, 2252, 2253, 2254, 2255, 2256, 2257, 2258, 2259, 2260, 2261, 2262, 2263, 2264, 2265, 2266, 2267, 2268, 2269, 2270, 2271, 2272, 2273, 2274, 2275, 2276, 2277, 2278, 2279, 2280, 2281, 2282, 2283, 2284, 2285, 2286, 2287, 2288, 2289, 2290, 2291, 2292, 2293, 2294, 2295, 2296, 2297, 2298, 2299, 2300, 2301, 2302, 2303, 2304, 2305, 2306, 2307, 2308, 2309, 2310, 2311, 2312, 2313, 2314, 2315, 2316, 2317, 2318, 2319, 2320, 2321, 2322, 2323, 2324, 2325, 2326, 2327, 2328, 2329, 2330, 2331, 2332, 2333, 2334, 2335, 2336, 2337, 2338, 2339, 2340, 2341, 2342, 2343, 2344, 2345, 2346, 2347, 2348, 2349, 2350, 2351, 2352, 2353, 2354, 2355, 2356, 2357, 2358, 2359, 2360, 2361, 2362, 2363, 2364, 2365, 2366, 2367, 2368, 2369, 2370, 2371, 2372, 2373, 2374, 2375, 2376, 2377, 2378, 2379, 2380, 2381, 2382, 2383, 2384, 2385, 2386, 2387, 2388, 2389, 2390, 2391, 2392, 2393, 2394, 2395, 2396, 2397, 2398, 2399, 2400, 2401, 2402, 2403, 2404, 2405, 2406, 2407, 2408, 2409, 2410, 2411, 2412, 2413, 2414, 2415, 2416, 2417, 2418, 2419, 2420, 2421, 2422, 2423, 2424, 2425, 2426, 2427, 2428, 2429, 2430, 2431, 2432, 2433, 2434, 2435, 2436, 2437, 2438, 2439, 2440, 2441, 2442, 2443, 2444, 2445, 2446, 2447, 2448, 2449, 2450, 2451, 2452, 2453, 2454, 2455, 2456, 2457, 2458, 2459, 2460, 2461, 2462, 2463, 2464, 2465, 2466, 2467, 2468, 2469, 2470, 2471, 2472, 2473, 2474, 2475, 2476, 2477, 2478, 2479, 2480, 2481, 2482, 2483, 2484, 2485, 2486, 2487, 2488, 2489, 2490, 2491, 2492, 2493, 2494, 2495, 2496, 2497, 2498, 2499, 2500, 2501, 2502, 2503, 2504, 2505, 2506, 2507, 2508, 2509, 2510, 2511, 2512, 2513, 2514, 2515, 2516, 2517, 2518, 2519, 2520, 2521, 2522, 2523, 2524, 2525, 2526, 2527, 2528, 2529, 2530, 2531, 2532, 2533, 2534, 2535, 2536, 2537, 2538, 2539, 2540, 2541, 2542, 2543, 2544, 2545, 2546, 2547, 2548, 2549, 2550, 2551, 2552, 2553, 2554, 2555, 2556, 2557, 2558, 2559, 2560, 2561, 2562, 2563, 2564, 2565, 2566, 2567, 2568, 2569, 2570, 2571, 2572, 2573, 2574, 2575, 2576, 2577, 2578, 2579, 2580, 2581, 2582, 2583, 2584, 2585, 2586, 2587, 2588, 2589, 2590, 2591, 2592, 2593, 2594, 2595, 2596, 2597, 2598, 2599, 2600, 2601, 2602, 2603, 2604, 2605, 2606, 2607, 2608, 2609, 2610, 2611, 2612, 2613, 2614, 2615, 2616, 2617, 2618, 2619, 2620, 2621, 2622, 2623, 2624, 2625, 2626, 2627, 2628, 2629, 2630, 2631, 2632, 2633, 2634, 2635, 2636, 2637, 2638, 2639, 2640, 2641, 2642, 2643, 2644, 2645, 2646, 2647, 2648, 2649, 2650, 2651, 2652, 2653, 2654, 2655, 2656, 2657, 2658, 2659, 2660, 2661, 2662, 2663, 2664, 2665, 2666, 2667, 2668, 2669, 2670, 2671, 2672, 2673, 2674, 2675, 2676, 2677, 2678, 2679, 2680, 2681, 2682, 2683, 2684, 2685, 2686, 2687, 2688, 2689, 2690, 2691, 2692, 2693, 2694, 2695, 2696, 2697, 2698, 2699, 2700, 2701, 2702, 2703, 2704, 2705, 2706, 2707, 2708, 2709, 2710, 2711, 2712, 2713, 2714, 2715, 2716, 2717, 2718, 2719, 2720, 2721, 2722, 2723, 2724, 2725, 2726, 2727, 2728, 2729, 2730, 2731, 2732, 2733, 2734, 2735, 2736, 2737, 2738, 2739, 2740, 2741, 2742, 2743, 2744, 2745, 2746, 2747, 2748, 2749, 2750, 2751, 2752, 2753, 2754, 2755, 2756, 2757, 2758, 2759, 2760, 2761, 2762, 2763, 2764, 2765, 2766, 2767, 2768, 2769, 2770, 2771, 2772, 2773, 2774, 2775, 2776, 2777, 2778, 2779, 2780, 2781, 2782, 2783, 2784, 2785, 2786, 2787, 2788, 2789, 2790, 2791, 2792, 2793, 2794, 2795, 2796, 2797, 2798, 2799, 2800, 2801, 2802, 2803, 2804, 2805, 2806, 2807, 2808, 2809, 2810, 2811, 2812, 2813, 2814, 2815, 2816, 2817, 2818, 2819, 2820, 2821, 2822, 2823, 2824, 2825, 2826, 2827, 2828, 2829, 2830, 2831, 2832, 2833, 2834, 2835, 2836, 2837, 2838, 2839, 2840, 2841, 2842, 2843, 2844, 2845, 2846, 2847, 2848, 2849, 2850, 2851, 2852, 2853, 2854, 2855, 2856, 2857, 2858, 2859, 2860, 2861, 2862, 2863, 2864, 2865, 2866, 2867, 2868, 2869, 2870, 2871, 2872, 2873, 2874, 2875, 2876, 2877, 2878, 2879, 2880, 2881, 2882, 2883, 2884, 2885, 2886, 2887, 2888, 2889, 2890, 2891, 2892, 2893, 2894, 2895, 2896, 2897, 2898, 2899, 2900, 2901, 2902, 2903, 2904, 2905, 2906, 2907, 2908, 2909, 2910, 2911, 2912, 2913, 2914, 2915, 2916, 2917, 2918, 2919, 2920, 2921, 2922, 2923, 2924, 2925, 2926, 2927, 2928, 2929, 2930, 2931, 2932, 2933, 2934, 2935, 2936, 2937, 2938, 2939, 2940, 2941, 2942, 2943, 2944, 2945, 2946, 2947, 2948, 2949, 2950, 2951, 2952, 2953, 2954, 2955, 2956, 2957, 2958, 2959, 2960, 2961, 2962, 2963, 2964, 2965, 2966, 2967, 2968, 2969, 2970, 2971, 2972, 2973, 2974, 2975, 2976, 2977, 2978, 2979, 2980, 2981, 2982, 2983, 2984, 2985, 2986, 2987, 2988, 2989, 2990, 2991, 2992, 2993, 2994, 2995, 2996, 2997, 2998, 2999, 3000, 3001, 3002, 3003, 3004, 3005, 3006, 3007, 3008, 3009, 3010, 3011, 3012, 3013, 3014, 3015, 3016, 3017, 3018, 3019, 3020, 3021, 3022, 3023, 3024, 3025, 3026, 3027, 3028, 3029, 3030, 3031, 3032, 3033, 3034, 3035, 3036, 3037, 3038, 3039, 3040, 3041, 3042, 3043, 3044, 3045, 3046, 3047, 3048, 3049, 3050, 3051, 3052, 3053, 3054, 3055, 3056, 3057, 3058, 3059, 3060, 3061, 3062, 3063, 3064, 3065, 3066, 3067, 3068, 3069, 3070, 3071, 3072, 3073, 3074, 3075, 3076, 3077, 3078, 3079, 3080, 3081, 3082, 3083, 3084, 3085, 3086, 3087, 3088, 3089, 3090, 3091, 3092, 3093, 3094, 3095, 3096, 3097, 3098, 3099, 3100, 3101, 3102, 3103, 3104, 3105, 3106, 3107, 3108, 3109, 3110, 3111, 3112, 3113, 3114, 3115, 3116, 3117, 3118, 3119, 3120, 3121, 3122, 3123, 3124, 3125, 3126, 3127, 3128, 3129, 3130, 3131, 3132, 3133, 3134, 3135, 3136, 3137, 3138, 3139, 3140, 3141, 3142, 3143, 3144, 3145, 3146, 3147, 3148, 3149, 3150, 3151, 3152, 3153, 3154, 3155, 3156, 3157, 3158, 3159, 3160, 3161, 3162, 3163, 3164, 3165, 3166, 3167, 3168, 3169, 3170, 3171, 3172, 3173, 3174, 3175, 3176, 3177, 3178, 3179, 3180, 3181, 3182, 3183, 3184, 3185, 3186, 3187, 3188, 3189, 3190, 3191, 3192, 3193, 3194, 3195, 3196, 3197, 3198, 3199, 3200, 3201, 3202, 3203, 3204, 3205, 3206, 3207, 3208, 3209, 3210, 3211, 3212, 3213, 3214, 3215, 3216, 3217, 3218, 3219, 3220, 3221, 3222, 3223, 3224, 3225, 3226, 3227, 3228, 3229, 3230, 3231, 3232, 3233, 3234, 3235, 3236, 3237, 3238, 3239, 3240, 3241, 3242, 3243, 3244, 3245, 3246, 3247, 3248, 3249, 3250, 3251, 3252, 3253, 3254, 3255, 3256, 3257, 3258, 3259, 3260, 3261, 3262, 3263, 3264, 3265, 3266, 3267, 3268, 3269, 3270, 3271, 3272, 3273, 3274, 3275, 3276, 3277, 3278, 3279, 3280, 3281, 3282, 3283, 3284, 3285, 3286, 3287, 3288, 3289, 3290, 3291, 3292, 3293, 3294, 3295, 3296, 3297, 3298, 3299, 3300, 3301, 3302, 3303, 3304, 3305, 3306, 3307, 3308, 3309, 3310, 3311, 3312, 3313, 3314, 3315, 3316, 3317, 3318, 3319, 3320, 3321, 3322, 3323, 3324, 3325, 3326, 3327, 3328, 3329, 3330, 3331, 3332, 3333, 3334, 3335, 3336, 3337, 3338, 3339, 3340, 3341, 3342, 3343, 3344, 3345, 3346, 3347, 3348, 3349, 3350, 3351, 3352, 3353, 3354, 3355, 3356, 3357, 3358, 3359, 3360, 3361, 3362, 3363, 3364, 3365, 3366, 3367, 3368, 3369, 3370, 3371, 3372, 3373, 3374, 3375, 3376, 3377, 3378, 3379, 3380, 3381, 3382, 3383, 3384, 3385, 3386, 3387, 3388, 3389, 3390, 3391, 3392, 3393, 3394, 3395, 3396, 3397, 3398, 3399, 3400, 3401, 3402, 3403, 3404, 3405, 3406, 3407, 3408, 3409, 3410, 3411, 3412, 3413, 3414, 3415, 3416, 3417, 3418, 3419, 3420, 3421, 3422, 3423, 3424, 3425, 3426, 3427, 3428, 3429, 3430, 3431, 3432, 3433, 3434, 3435, 3436, 3437, 3438, 3439, 3440, 3441, 3442, 3443, 3444, 3445, 3446, 3447, 3448, 3449, 3450, 3451, 3452, 3453, 3454, 3455, 3456, 3457, 3458, 3459, 3460, 3461, 3462, 3463, 3464, 3465, 3466, 3467, 3468, 3469, 3470, 3471, 3472, 3473, 3474, 3475, 3476, 3477, 3478, 3479, 3480, 3481, 3482, 3483, 3484, 3485, 3486, 3487, 3488, 3489, 3490, 3491, 3492, 3493, 3494, 3495, 3496, 3497, 3498, 3499, 3500, 3501, 3502, 3503, 3504, 3505, 3506, 3507, 3508, 3509, 3510, 3511, 3512, 3513, 3514, 3515, 3516, 3517, 3518, 3519, 3520, 3521, 3522, 3523, 3524, 3525, 3526, 3527, 3528, 3529, 3530, 3531, 3532, 3533, 3534, 3535, 3536, 3537, 3538, 3539, 3540, 3541, 3542, 3543, 3544, 3545, 3546, 3547, 3548, 3549, 3550, 3551, 3552, 3553, 3554, 3555, 3556, 3557, 3558, 3559, 3560, 3561, 3562, 3563, 3564, 3565, 3566, 3567, 3568, 3569, 3570, 3571, 3572, 3573, 3574, 3575, 3576, 3577, 3578, 3579, 3580, 3581, 3582, 3583, 3584, 3585, 3586, 3587, 3588, 3589, 3590, 3591, 3592, 3593, 3594, 3595, 3596, 3597,

**Classified Advertisements**  
 CLASSIFIED ADVT.  
 DEPT. HOURS  
 8:15 A. M. to 4:30 P. M.  
 COPY CLOSING TIME  
 FOR CLASSIFIED ADVT.  
 MON. THRU FRI.  
 10:30 A. M.  
 SATURDAY 9 A. M.  
 YOUR COOPERATION WILL BE APPRECIATED  
 Dial MI 3-1521

**Lost and Found**  
 LOST—Black pocketbook at dance in Orange Hall, Saturday night. Please return to 366 Chestnut St.  
 LOST—Iridescent beach. Reward \$10.00. Return to 366 Chestnut St.

**Announcements**  
 SADDLE HORSE for hire at the Blue Hill Farm, 1000 N. Main St., Manchester, Conn. Tel. 8-1200. Only \$1.00 per hour. Free trial. Tel. 8-1200. MI 7-098 at 9:30 p.m.

**Personals**  
 WANTED—A wife to live in Hartford about 1:30 a.m. in vicinity of North Main and Buckland Sts. Tel. 8-1200. MI 7-098 at 9:30 p.m.

**Automobiles for Sale**  
 1951 Nash Rambler Handicap Convertible. Low mileage. Guaranteed excellent condition. Priced for quick sale. Tel. 8-1200. MI 7-098 at 9:30 p.m.

**Trailer**  
 ANDERSON 20 ft. aluminum trailer, with bath. Excellent condition. Call Tel. 8-1200. MI 7-098 at 9:30 p.m.

**Auto Driving School**  
 LARSON'S DRIVING SCHOOL. Manchester's only trained and licensed instructor. 1000 N. Main St., Tel. 8-1200. MI 7-098 at 9:30 p.m.

**Garage for Rent**  
 GARAGE FOR RENT. 31 Hollister Street. Tel. 8-1200. MI 7-098 at 9:30 p.m.

**Business Services Offered**  
 HILL'S TELEVISION SERVICE. Available at all times. Priced to meet your needs. Tel. 8-1200. MI 7-098 at 9:30 p.m.

**Look-Alikes Are Fun**  
 8124 10-20

**Automobiles for Sale**  
 CLOSING OUT ALL USED CARS  
 ROCK BOTTOM PRICES  
 1957 Plymouth four door sedan, Radio, heater, overdrive. \$1295.  
 1955 Ford V8 four door sedan, Radio, heater, Fordomatic, 218.  
 1955 Ford V8 country coach, eight passenger, Radio, heater, \$1495.  
 1953 Chevrolet four door sedan, Radio, heater, \$1295.  
 1953 Dodge four door sedan, Radio, heater, automatic transmission, \$1195.  
 1954 Oldsmobile 41 four-door sedan, Radio, heater, overdrive, power steering and power brakes, \$1295.  
 1954 Studebaker V8 station wagon, Radio, heater, overdrive. \$1795.  
 1953 Mercury two-door hardtop, Radio, heater, Continental tires, \$1495.  
 20 others to choose from.  
 Small down payment. Bank rates.  
**CHORCHES MOTORS**  
 200 OAKLAND STREET  
 MI 9-8483

**FALL HARVEST OF VALUES**  
**EDDIE'S AUTO SERVICE**  
 70 OAKLAND STREET  
 MI 3-1208  
 1951 Nash Rambler Handicap Convertible. Low mileage. Guaranteed excellent condition. Priced for quick sale. Tel. 8-1200. MI 7-098 at 9:30 p.m.

**Home Knitting Machines**  
 HOME KNITTING machines and sewing machines, sold, serviced, repaired. Tel. 8-1200. MI 7-098 at 9:30 p.m.

**Need a Mortgage?**  
 NEED A MORTGAGE? Quick cash available for first, second, third mortgages. Call Tel. 8-1200. MI 7-098 at 9:30 p.m.

**Heating and Plumbing**  
 S. WATSON, PLUMBING and heating contractor. New installations, alterations work and repair work. Tel. 8-1200. MI 7-098 at 9:30 p.m.

**Millinery Dressmaking**  
 DRESSMAKING and alterations. Call Tel. 8-1200. MI 7-098 at 9:30 p.m.

**Household Services**  
 ABSOLUTE Bargain—Upholstering, drapes and slip covers, 179.50. Tel. 8-1200. MI 7-098 at 9:30 p.m.

**Painting—Papering**  
 PAINTING, exterior and interior. Papering, wallpapering. Tel. 8-1200. MI 7-098 at 9:30 p.m.

**Building—Contracting**  
 BUILDING CONTRACTING. Tel. 8-1200. MI 7-098 at 9:30 p.m.

**Private Instructions**  
 DRUMMING lessons. Tel. 8-1200. MI 7-098 at 9:30 p.m.

**Read Herald Ads.**

**SEPTIC TANKS**  
 Cleaned and installed. Tel. 8-1200. MI 7-098 at 9:30 p.m.

**INSTALLATION SPECIALIST**  
 Sewer and water lines. Tel. 8-1200. MI 7-098 at 9:30 p.m.

**Aluminum Storms and Screens**  
 14-A. Tel. 8-1200. MI 7-098 at 9:30 p.m.

**Roofing—Sliding**  
 RA's ROOFING CO. Tel. 8-1200. MI 7-098 at 9:30 p.m.

**OVERSIZE GAPE**  
 6 finished rooms, enclosed porch, basement garage. Tel. 8-1200. MI 7-098 at 9:30 p.m.

**THE R. F. DIMOCK CO.**  
 Tel. 8-1200. MI 7-098 at 9:30 p.m.

**ELSIE MEYER**  
 Tel. 8-1200. MI 7-098 at 9:30 p.m.

**Business Of Your Own**  
 SUNOCO SERVICE STATION. Tel. 8-1200. MI 7-098 at 9:30 p.m.

**WANTED**  
 Experienced Linotype-Intertype Operator. Tel. 8-1200. MI 7-098 at 9:30 p.m.

**FOR RENT**  
 Office space at 77 Main St. Tel. 8-1200. MI 7-098 at 9:30 p.m.

**FOR SALE**  
 Solid mahogany dining room set. Tel. 8-1200. MI 7-098 at 9:30 p.m.

**FOR RENT**  
 1300 So. Ft. Very desirable. Tel. 8-1200. MI 7-098 at 9:30 p.m.

**REWARD**  
 Yourself. Tel. 8-1200. MI 7-098 at 9:30 p.m.

**FOR RENT**  
 Office space at 77 Main St. Tel. 8-1200. MI 7-098 at 9:30 p.m.

**FOR SALE**  
 Solid mahogany dining room set. Tel. 8-1200. MI 7-098 at 9:30 p.m.

**FOR RENT**  
 Office space at 77 Main St. Tel. 8-1200. MI 7-098 at 9:30 p.m.

**Business Services Offered**  
 CLEAR AND paint those gutters. Tel. 8-1200. MI 7-098 at 9:30 p.m.

**REFRIGERATION**  
 Commercial, residential air conditioning. Tel. 8-1200. MI 7-098 at 9:30 p.m.

**TRUCKING**  
 Local and long distance. Tel. 8-1200. MI 7-098 at 9:30 p.m.

**Home Knitting Machines**  
 Home Knitting machines and sewing machines. Tel. 8-1200. MI 7-098 at 9:30 p.m.

**Need a Mortgage?**  
 Need a mortgage? Quick cash available. Tel. 8-1200. MI 7-098 at 9:30 p.m.

**Heating and Plumbing**  
 Heating and plumbing services. Tel. 8-1200. MI 7-098 at 9:30 p.m.

**Millinery Dressmaking**  
 Millinery and dressmaking. Tel. 8-1200. MI 7-098 at 9:30 p.m.

**Household Services**  
 Household services. Tel. 8-1200. MI 7-098 at 9:30 p.m.

**Painting—Papering**  
 Painting and papering. Tel. 8-1200. MI 7-098 at 9:30 p.m.

**Building—Contracting**  
 Building and contracting. Tel. 8-1200. MI 7-098 at 9:30 p.m.

**Private Instructions**  
 Private instructions. Tel. 8-1200. MI 7-098 at 9:30 p.m.

**Read Herald Ads.**

**SEPTIC TANKS**  
 Septic tanks. Tel. 8-1200. MI 7-098 at 9:30 p.m.

**INSTALLATION SPECIALIST**  
 Installation specialist. Tel. 8-1200. MI 7-098 at 9:30 p.m.

**Aluminum Storms and Screens**  
 Aluminum storms and screens. Tel. 8-1200. MI 7-098 at 9:30 p.m.

**Roofing—Sliding**  
 Roofing and sliding. Tel. 8-1200. MI 7-098 at 9:30 p.m.

**OVERSIZE GAPE**  
 Oversize gape. Tel. 8-1200. MI 7-098 at 9:30 p.m.

**THE R. F. DIMOCK CO.**  
 The R. F. Dimock Co. Tel. 8-1200. MI 7-098 at 9:30 p.m.

**ELSIE MEYER**  
 Elsie Meyer. Tel. 8-1200. MI 7-098 at 9:30 p.m.

**Business Of Your Own**  
 Business of your own. Tel. 8-1200. MI 7-098 at 9:30 p.m.

**WANTED**  
 Wanted. Tel. 8-1200. MI 7-098 at 9:30 p.m.

**FOR RENT**  
 For rent. Tel. 8-1200. MI 7-098 at 9:30 p.m.

**FOR SALE**  
 For sale. Tel. 8-1200. MI 7-098 at 9:30 p.m.

**FOR RENT**  
 For rent. Tel. 8-1200. MI 7-098 at 9:30 p.m.

**FOR SALE**  
 For sale. Tel. 8-1200. MI 7-098 at 9:30 p.m.

**FOR RENT**  
 For rent. Tel. 8-1200. MI 7-098 at 9:30 p.m.

**FOR SALE**  
 For sale. Tel. 8-1200. MI 7-098 at 9:30 p.m.

**THERE OUGHTA BE A LAW AGAINST...**  
 THE GARAGE GENDERMEN...  
 THE LITTLE ANGLES...  
 ALL RIGHT! ALL RIGHT!...  
 AND THEN SPED AWAY...  
 SWALLOWING...  
 ALREADY!

**Help Wanted—Male**  
 WANTED—Plumbers and heating mechanics to help. Call Tel. 8-1200. MI 7-098 at 9:30 p.m.

**Help Wanted—Female**  
 WANTED—Female for office work. Tel. 8-1200. MI 7-098 at 9:30 p.m.

**Help Wanted—Male**  
 WANTED—Male for construction work. Tel. 8-1200. MI 7-098 at 9:30 p.m.

**Help Wanted—Female**  
 WANTED—Female for retail work. Tel. 8-1200. MI 7-098 at 9:30 p.m.

**Help Wanted—Male**  
 WANTED—Male for manual labor. Tel. 8-1200. MI 7-098 at 9:30 p.m.

**Help Wanted—Female**  
 WANTED—Female for clerical work. Tel. 8-1200. MI 7-098 at 9:30 p.m.

**Help Wanted—Male**  
 WANTED—Male for heavy work. Tel. 8-1200. MI 7-098 at 9:30 p.m.

**Help Wanted—Female**  
 WANTED—Female for part-time work. Tel. 8-1200. MI 7-098 at 9:30 p.m.

**Help Wanted—Male**  
 WANTED—Male for skilled work. Tel. 8-1200. MI 7-098 at 9:30 p.m.

**Help Wanted—Female**  
 WANTED—Female for administrative work. Tel. 8-1200. MI 7-098 at 9:30 p.m.

**Help Wanted—Male**  
 WANTED—Male for technical work. Tel. 8-1200. MI 7-098 at 9:30 p.m.

**Help Wanted—Female**  
 WANTED—Female for customer service. Tel. 8-1200. MI 7-098 at 9:30 p.m.

**Help Wanted—Male**  
 WANTED—Male for maintenance work. Tel. 8-1200. MI 7-098 at 9:30 p.m.

**Help Wanted—Female**  
 WANTED—Female for data entry. Tel. 8-1200. MI 7-098 at 9:30 p.m.

**Help Wanted—Male**  
 WANTED—Male for assembly work. Tel. 8-1200. MI 7-098 at 9:30 p.m.

**Help Wanted—Female**  
 WANTED—Female for receptionist. Tel. 8-1200. MI 7-098 at 9:30 p.m.

**Help Wanted—Male**  
 WANTED—Male for warehouse work. Tel. 8-1200. MI 7-098 at 9:30 p.m.

**Help Wanted—Female**  
 WANTED—Female for sales. Tel. 8-1200. MI 7-098 at 9:30 p.m.

**Help Wanted—Male**  
 WANTED—Male for production work. Tel. 8-1200. MI 7-098 at 9:30 p.m.

**Help Wanted—Female**  
 WANTED—Female for training. Tel. 8-1200. MI 7-098 at 9:30 p.m.

**Help Wanted—Male**  
 WANTED—Male for quality control. Tel. 8-1200. MI 7-098 at 9:30 p.m.

**Help Wanted—Female**  
 WANTED—Female for project management. Tel. 8-1200. MI 7-098 at 9:30 p.m.

**Help Wanted—Male**  
 WANTED—Male for systems administration. Tel. 8-1200. MI 7-098 at 9:30 p.m.

**Help Wanted—Female**  
 WANTED—Female for human resources. Tel. 8-1200. MI 7-098 at 9:30 p.m.

**Help Wanted—Male**  
 WANTED—Male for operations. Tel. 8-1200. MI 7-098 at 9:30 p.m.

**Help Wanted—Female**  
 WANTED—Female for compliance. Tel. 8-1200. MI 7-098 at 9:30 p.m.

**Articles for Sale**  
 ELECTROMASTER electric stove. Tel. 8-1200. MI 7-098 at 9:30 p.m.

**Household Goods**  
 Household goods for sale. Tel. 8-1200. MI 7-098 at 9:30 p.m.

**Rooms Without Board**  
 Rooms without board. Tel. 8-1200. MI 7-098 at 9:30 p.m.

**Houses for Sale**  
 Houses for sale. Tel. 8-1200. MI 7-098 at 9:30 p.m.

**Houses for Sale**  
 Houses for sale. Tel. 8-1200. MI 7-098 at 9:30 p.m.

**Suburban for Sale**  
 Suburban for sale. Tel. 8-1200. MI 7-098 at 9:30 p.m.

**Eisenhower Picks Larsen**  
 Eisenhower picks Larsen. Tel. 8-1200. MI 7-098 at 9:30 p.m.

**Church Group Seen Merging**  
 Church group seen merging. Tel. 8-1200. MI 7-098 at 9:30 p.m.

**State Paying 82% Of Teachers' Wages**  
 State paying 82% of teachers' wages. Tel. 8-1200. MI 7-098 at 9:30 p.m.

**Multiple Listing Service**  
 Multiple listing service. Tel. 8-1200. MI 7-098 at 9:30 p.m.

**Rockville Police Discover Grant's Robbed**  
 Rockville police discover Grant's robbed. Tel. 8-1200. MI 7-098 at 9:30 p.m.

**Jaycees Raps Medical Unit**  
 Jaycees raps medical unit. Tel. 8-1200. MI 7-098 at 9:30 p.m.

**3,290 New Flu Cases in State**  
 3,290 new flu cases in state. Tel. 8-1200. MI 7-098 at 9:30 p.m.

**Miss Channel 30 Crowning Tonight**  
 Miss Channel 30 crowning tonight. Tel. 8-1200. MI 7-098 at 9:30 p.m.

**Report on Traffic Set for Monday**  
 Report on traffic set for Monday. Tel. 8-1200. MI 7-098 at 9:30 p.m.

**54% OF KENTUCKY FOREST**  
 54% of Kentucky forest. Tel. 8-1200. MI 7-098 at 9:30 p.m.

**Correction**  
 Correction. Tel. 8-1200. MI 7-098 at 9:30 p.m.

**Correction**  
 Correction. Tel. 8-1200. MI 7-098 at 9:30 p.m.

**Correction**  
 Correction. Tel. 8-1200. MI 7-098 at 9:30 p.m.

**Correction**  
 Correction. Tel. 8-1200. MI 7-098 at 9:30 p.m.

**Correction**  
 Correction. Tel. 8-1200. MI 7-098 at 9:30 p.m.

**Correction**  
 Correction. Tel. 8-1200. MI 7-098 at 9:30 p.m.

**Correction**  
 Correction. Tel. 8-1200. MI 7-098 at 9:30 p.m.

**Correction**  
 Correction. Tel. 8-1200. MI 7-098 at 9:30 p.m.

**Correction**  
 Correction. Tel. 8-1200. MI 7-098 at 9:30 p.m.

**Correction**  
 Correction. Tel. 8-1200. MI 7-098 at 9:30 p.m.

**Correction**  
 Correction. Tel. 8-1200. MI 7-098 at 9:30 p.m.

**Articles for Sale**  
 Articles for sale. Tel. 8-1200. MI 7-098 at 9:30 p.m.

**Household Goods**  
 Household goods. Tel. 8-1200. MI 7-098 at 9:30 p.m.

**Rooms Without Board**  
 Rooms without board. Tel. 8-1200. MI 7-098 at 9:30 p.m.

**Houses for Sale**  
 Houses for sale. Tel. 8-1200. MI 7-098 at 9:30 p.m.

**Houses for Sale**  
 Houses for sale. Tel. 8-1200. MI 7-098 at 9:30 p.m.

**Suburban for Sale**  
 Suburban for sale. Tel. 8-1200. MI 7-098 at 9:30 p.m.

**Eisenhower Picks Larsen**  
 Eisenhower picks Larsen. Tel. 8-1200. MI 7-098 at 9:30 p.m.

**Church Group Seen Merging**  
 Church group seen merging. Tel. 8-1200. MI 7-098 at 9:30 p.m.

**State Paying 82% Of Teachers' Wages**  
 State paying 82% of teachers' wages. Tel. 8-1200. MI 7-098 at 9:30 p.m.

**Multiple Listing Service**  
 Multiple listing service. Tel. 8-1200. MI 7-098 at 9:30 p.m.

**Rockville Police Discover Grant's Robbed**  
 Rockville police discover Grant's robbed. Tel. 8-1200. MI 7-098 at 9:30 p.m.

**Jaycees Raps Medical Unit**  
 Jaycees raps medical unit. Tel. 8-1200. MI 7-098 at 9:30 p.m.

**3,290 New Flu Cases in State**  
 3,290 new flu cases in state. Tel. 8-1200. MI 7-098 at 9:30 p.m.

**Miss Channel 30 Crowning Tonight**  
 Miss Channel 30 crowning tonight. Tel. 8-1200. MI 7-098 at 9:30 p.m.

**Report on Traffic Set for Monday**  
 Report on traffic set for Monday. Tel. 8-1200. MI 7-098 at 9:30 p.m.

**54% OF KENTUCKY FOREST**  
 54% of Kentucky forest. Tel. 8-1200. MI 7-098 at 9:30 p.m.

**Correction**  
 Correction. Tel. 8-1200. MI 7-098 at 9:30 p.m.

**Correction**  
 Correction. Tel. 8-1200. MI 7-098 at 9:30 p.m.

**Correction**  
 Correction. Tel. 8-1200. MI 7-098 at 9:30 p.m.

**Correction**  
 Correction. Tel. 8-1200. MI 7-098 at 9:30 p.m.

**Correction**  
 Correction. Tel. 8-1200. MI 7-098 at 9:30 p.m.

**Correction**  
 Correction. Tel. 8-1200. MI 7-098 at 9:30 p.m.

**Correction**  
 Correction. Tel. 8-1200. MI 7-098 at 9:30 p.m.

**Correction**  
 Correction. Tel. 8-1200. MI 7-098 at 9:30 p.m.

**Correction**  
 Correction. Tel. 8-1200. MI 7-098 at 9:30 p.m.

**Correction**  
 Correction. Tel. 8-1200. MI 7-098 at 9:30 p.m.

**Correction**  
 Correction. Tel. 8-

Average Daily Net Press Run For the Week Ended October 15, 1957 12,690

Manchester Evening Herald

Manchester—A City of Village Charm

The Weather Forecast of U. S. Weather Bureau

PRICE FIVE CENTS

About Town

The Ladies Aid Society of the Buckingham Congregational Church has the date of Saturday, Nov. 5, for its annual Harvest Supper and Fair.

Notice

Bidwell's Soda Shop 837 Main St., Manchester Will be CLOSED every Monday — beginning Monday, Oct. 21.

Supper and Fair. It will open at 1:30 p.m. and continue to 10:30 p.m. with supper served at three o'clock. The Ladies Aid Society of the Buckingham Congregational Church has the date of Saturday, Nov. 5, for its annual Harvest Supper and Fair.

The Little Flower of Jesus Mother and Child Society will hold a regular meeting tomorrow night at 7:45 at the home of Mrs. James Murphy, 22 Wadsworth Rd. A toy demonstration will follow the meeting. The co-chairman of the supper is Mrs. Donald Dyer.

A liquidation sale of surplus machinery at Gray Manufacturing Co., 458 Hilliard St., scheduled for Monday, will not be held, according to Louia Marnitt, New Haven hardware wholesaler, who is handling the transaction.

Hartford Pembroke College Club will meet at the home of Mrs. Philip Steiger Jr., 8 Brighton Rd., West Hartford, Tuesday at 8 p.m. Mrs. Harold Holstein, president of the Women's Auxiliary of St. James, requests that members of the club bring a book to read and also slides Mrs. Vincent M. Corcoran Jr. and Mrs. Elizabeth Root will serve refreshments.

Buckingham Church men will attend the first of two sessions of the season of the Hartford East Congregational Church tomorrow at 8:45 p.m. at the First Congregational Church East Hartford. Dr. Kenneth Kohler, executive secretary of the Churchmen's Brotherhood, will be the speaker.

The American Legion Auxiliary will hold its second meeting of the month Monday at 8 p.m. in the Legion Home. Guests will be the two high school girls who attended Girls State at Storrs last June and their parents.

Mrs. Anthony J. Gray, general chairman of the harvest home being held Saturday night in St. James' School hall by the Ladies Aid Society of St. James, requests that members of the church bring a book to read and also slides Mrs. Vincent M. Corcoran Jr. and Mrs. Elizabeth Root will serve refreshments.

The second of three Thursday evening meetings will be held tonight at Center Congregational Church at 8 o'clock. The Rev. Clifford O. Clark is conducting the series which deals with the earliest scriptures of the Old Testament.

The American Legion Auxiliary will hold its second meeting of the month Monday at 8 p.m. in the Legion Home. Guests will be the two high school girls who attended Girls State at Storrs last June and their parents.

Arthur R. Taylor, admission officer of Brown University, Providence, R.I., will be presented the University's first production of the season, "Under the Spooklight," at the Bowers School.

The Manchester Community Players will meet at the home of their president, Philip Russell, 83 Chandler St., at 8 o'clock Saturday night. Committees will be formed for the season. Under the sponsorship of the Manchester Registered Nurses Assn., it will be presented Nov. 15 and 16 at the Bowers School.

The WBA Guild Club will hold its anniversary dinner tonight at the Rosemont Restaurant in Bolton at 6 o'clock.

TOMORROW!

HOSPITAL AUXILIARY RUMMAGE SALE

AMERICAN LEGION HALL

Good, Clean Clothing For Children and Adults

Over 250 Pairs of Shoes For Men, Women and Children

Household Articles of Every Kind

DOORS OPEN AT 9:15 A.M.

Flu Epidemic Here: Osborn On Mideast

United Nations, N. Y., Oct. 18 (AP)—Prodded by Syria and the Soviet Union, the Security Council today announced an urgent session today to take up charges the United States and Turkey are about to touch off a Middle East war.

The 17-nation steering committee scheduled an afternoon meeting to discuss the charges. The Assembly's Syria charges that she is in danger of an imminent Turkish attack.

The Assembly planned to convene tonight after the Steering Committee meeting to take up the charges. The Assembly's Syria charges that she is in danger of an imminent Turkish attack.

The purpose of the department's rapid reporting system instituted a week ago, the commissioner explained, is to warn areas of the state of a flu epidemic as early as possible.

In the latest batch of 11,000 samples taken in Voluntary Dr. Osborn said, more than half were positive for Asian flu.

After the last of this batch of about 20 is completed, he said, further tests will be conducted.

"There is no need waiting our word," said Dr. Osborn today. "We just wanted to be sure we had it, and now we know we have got it."

60,000 on Thursday. In the meantime, reports of flu cases continue to pour into the State Health Department. Most of them are based on school reports.

The total estimate for the week through Thursday is 1,000 in public schools, 250 in private schools, and 500 in adults.

Other communities which today reported estimates for the week through Thursday are listed by the State Health Department as follows: West

Bridgeport, 4,960; Cheshire, 830; and New Haven, 5,681. Middlebury turned in its first report since the epidemic began—900 cases through Thursday.

Dr. Osborn stated today that 80 per cent of the flu cases in the state is probably Asian.

The only parts of the state which so far have not reported any cases to the department, are the northeastern and the western Massachusetts line and the western New England and Western Massachusetts.

Dr. Osborn said that this lack of information is due to the fact that the department has not yet received reports from these areas.

From that entire area, only the Southern Berkshire section reported a sighting of the satellite.

Pointing out that no more than a few sightings of the satellite have been made, compared with hundreds of sightings of the common cold, Dr. Osborn said:

"In a mild degree, our amateur observers have been asked to report only the most obvious sightings of the satellite.

"When people see the magnificent spectacle of the rocket passing majestically across the sky they are deluged into thinking the satellite—the satellite—will be easy to see.

"The Russian observer knew from the beginning that to spot the satellite would be a feat of a job.

"We western scientists bent the necks of the satellite in our flight, reverberations of the Russian satellite have been reported in our own observations.

"The Russian satellite was a political object, and we were not interested in it as a scientific object.

"The Russian satellite was a political object, and we were not interested in it as a scientific object.

"The Russian satellite was a political object, and we were not interested in it as a scientific object.

"The Russian satellite was a political object, and we were not interested in it as a scientific object.

"The Russian satellite was a political object, and we were not interested in it as a scientific object.

"The Russian satellite was a political object, and we were not interested in it as a scientific object.

"The Russian satellite was a political object, and we were not interested in it as a scientific object.

"The Russian satellite was a political object, and we were not interested in it as a scientific object.

"The Russian satellite was a political object, and we were not interested in it as a scientific object.

"The Russian satellite was a political object, and we were not interested in it as a scientific object.

"The Russian satellite was a political object, and we were not interested in it as a scientific object.

"The Russian satellite was a political object, and we were not interested in it as a scientific object.

"The Russian satellite was a political object, and we were not interested in it as a scientific object.

"The Russian satellite was a political object, and we were not interested in it as a scientific object.

"The Russian satellite was a political object, and we were not interested in it as a scientific object.

"The Russian satellite was a political object, and we were not interested in it as a scientific object.

"The Russian satellite was a political object, and we were not interested in it as a scientific object.

"The Russian satellite was a political object, and we were not interested in it as a scientific object.

"The Russian satellite was a political object, and we were not interested in it as a scientific object.

"The Russian satellite was a political object, and we were not interested in it as a scientific object.

resident Suggests NATO Pool Scientists, Resources

Washington, Oct. 18 (AP)—President Eisenhower is developing a far-reaching proposal to pool the scientific manpower and creative resources of the North Atlantic Alliance.

The first hint of a program along this line came in the Eisenhower proposal to Britain's Queen Elizabeth last week.

Officially announced today the program is to be a major topic of discussion when Eisenhower meets British Prime Minister Harold Macmillan here next Wednesday.

What the President has in mind, however, is a far-reaching program to pool the scientific manpower and creative resources of the North Atlantic Alliance.

The program is to be a major topic of discussion when Eisenhower meets British Prime Minister Harold Macmillan here next Wednesday.

Officially announced today the program is to be a major topic of discussion when Eisenhower meets British Prime Minister Harold Macmillan here next Wednesday.

Officially announced today the program is to be a major topic of discussion when Eisenhower meets British Prime Minister Harold Macmillan here next Wednesday.

Officially announced today the program is to be a major topic of discussion when Eisenhower meets British Prime Minister Harold Macmillan here next Wednesday.

Officially announced today the program is to be a major topic of discussion when Eisenhower meets British Prime Minister Harold Macmillan here next Wednesday.

Officially announced today the program is to be a major topic of discussion when Eisenhower meets British Prime Minister Harold Macmillan here next Wednesday.

Officially announced today the program is to be a major topic of discussion when Eisenhower meets British Prime Minister Harold Macmillan here next Wednesday.

Officially announced today the program is to be a major topic of discussion when Eisenhower meets British Prime Minister Harold Macmillan here next Wednesday.

Officially announced today the program is to be a major topic of discussion when Eisenhower meets British Prime Minister Harold Macmillan here next Wednesday.

Officially announced today the program is to be a major topic of discussion when Eisenhower meets British Prime Minister Harold Macmillan here next Wednesday.

Officially announced today the program is to be a major topic of discussion when Eisenhower meets British Prime Minister Harold Macmillan here next Wednesday.

Officially announced today the program is to be a major topic of discussion when Eisenhower meets British Prime Minister Harold Macmillan here next Wednesday.

Officially announced today the program is to be a major topic of discussion when Eisenhower meets British Prime Minister Harold Macmillan here next Wednesday.

Officially announced today the program is to be a major topic of discussion when Eisenhower meets British Prime Minister Harold Macmillan here next Wednesday.

Officially announced today the program is to be a major topic of discussion when Eisenhower meets British Prime Minister Harold Macmillan here next Wednesday.

Officially announced today the program is to be a major topic of discussion when Eisenhower meets British Prime Minister Harold Macmillan here next Wednesday.

Officially announced today the program is to be a major topic of discussion when Eisenhower meets British Prime Minister Harold Macmillan here next Wednesday.

Officially announced today the program is to be a major topic of discussion when Eisenhower meets British Prime Minister Harold Macmillan here next Wednesday.

Officially announced today the program is to be a major topic of discussion when Eisenhower meets British Prime Minister Harold Macmillan here next Wednesday.

Officially announced today the program is to be a major topic of discussion when Eisenhower meets British Prime Minister Harold Macmillan here next Wednesday.

Officially announced today the program is to be a major topic of discussion when Eisenhower meets British Prime Minister Harold Macmillan here next Wednesday.

Officially announced today the program is to be a major topic of discussion when Eisenhower meets British Prime Minister Harold Macmillan here next Wednesday.

Officially announced today the program is to be a major topic of discussion when Eisenhower meets British Prime Minister Harold Macmillan here next Wednesday.

Officially announced today the program is to be a major topic of discussion when Eisenhower meets British Prime Minister Harold Macmillan here next Wednesday.

Officially announced today the program is to be a major topic of discussion when Eisenhower meets British Prime Minister Harold Macmillan here next Wednesday.

Officially announced today the program is to be a major topic of discussion when Eisenhower meets British Prime Minister Harold Macmillan here next Wednesday.

Officially announced today the program is to be a major topic of discussion when Eisenhower meets British Prime Minister Harold Macmillan here next Wednesday.

Officially announced today the program is to be a major topic of discussion when Eisenhower meets British Prime Minister Harold Macmillan here next Wednesday.

Officially announced today the program is to be a major topic of discussion when Eisenhower meets British Prime Minister Harold Macmillan here next Wednesday.

Officially announced today the program is to be a major topic of discussion when Eisenhower meets British Prime Minister Harold Macmillan here next Wednesday.

Officially announced today the program is to be a major topic of discussion when Eisenhower meets British Prime Minister Harold Macmillan here next Wednesday.

Officially announced today the program is to be a major topic of discussion when Eisenhower meets British Prime Minister Harold Macmillan here next Wednesday.

Officially announced today the program is to be a major topic of discussion when Eisenhower meets British Prime Minister Harold Macmillan here next Wednesday.

Officially announced today the program is to be a major topic of discussion when Eisenhower meets British Prime Minister Harold Macmillan here next Wednesday.

Officially announced today the program is to be a major topic of discussion when Eisenhower meets British Prime Minister Harold Macmillan here next Wednesday.

Shurfine FOOD FESTIVAL. Pinhurst Fall Canned Food Sale this year will be known as the SHURFINE FOOD FESTIVAL.

SHURFINE CREAM CORN 4 Cans 55c. SHURFINE Colossal PEAS 4 Cans 69c. SHURFINE GREEN BEANS 4 Cans 69c. SHURFINE SLICED BEETS 4 Cans 49c. SHURFINE APPLE SAUCE 4 Cans 62c. SHURFINE GRAPEFRUIT 4 Cans 69c. SHURFINE BAKED BEANS 2 Large 2 1/2 Cans 45c.

New Stuffed BUTTERFLY SWIFT'S PREMIUM TURKEYS. 10 to 12 Lbs. 5.95. Two Special Food Festival Values. WHITE ROCK FARM FRESH FRYERS and BROILERS 99c.

WHITE ROCK FARM FRESH CHICKEN LEGS 59c. PINEHURST PORTERHOUSE STEAK lb. 99c. PINEHURST BEEF STEAK lb. 65c.

For Fresher by Far Vegetables... Fruit. SWEET MELONS 49c. FRESH CARROTS 10c. NEW RED TOKAY GRAPES 2 Lbs. 35c. APPLES 3 Lbs. 39c.

PINEHURST GROCERY, INC. 302 MAIN ST. PARKING CARRY OUT SERVICE. CORNED BEEF lb. 59c. BEEF STEAK lb. 65c.

HAPPY BIRTHDAY BUYS AT HALE'S SELF SERVE and MEAT DEPT. Campbell's Kids BIRTHDAY CELEBRATION. HALE'S 82nd Anniversary... COOKIE DEPT. SPECIALS.

ARMOUR'S STAR BEEF STEW 2 1/2 Lb. Cans 75c. CORNED BEEF 2 1/2 Lb. Tins 79c. FRESH PRODUCE. Red Bananas lb. 19c. Honeydew Melons ea. 49c.

PREMIER FANCY LIGHT MEAT TUNA 4 7 Oz. Cans 99c. BETTY CROCKER BUTTIN MIX 2 pkgs. 63c. CRISCO 3 lbs. 92c. ELBERTA PEACHES 3 LARGE CANS 99c.

NEW! The \$25,000 Winning Recipe in Pillsbury's BEST 9th GRAND NATIONAL Bake-Off. ACCORDION TREATS. \$25,000 grand prize winner in Pillsbury's 9th grand national recipe and baking contest.

GRANDMOTHER'S CUT Mixed Fruit 2 1/2 Lb. Cans 33c. FRESH CORN 13 Oz. Cans 33c. NIBLETS VACUUM PACKED FRESH CORN 2 1/2 Lb. Cans 33c.

TOP GRADE FOWL 1/2 Lb. 29c. CORNED BEEF lb. 59c. HALE'S BACON lb. 69c. SHANK HALF lb. 55c. BUTT HALF lb. 65c.

HALE'S MEAT DEPT. SUGAR CURED HICKORY SMOKED DUBUQUE HAMS. CORNER MAIN AND OAK STREETS.

10 True Sightings So Far on Sputnik. Cambridge, Mass., Oct. 18 (AP)—Dr. Frank N. Spitz, coordinator of visual observation for Project Sputnik, says there have been no more than 10 actual sightings of the satellite in the free world.

Bonn Delaying Full Split with Tito's Regime. Bonn, Germany, Oct. 18 (AP)—Yugoslav embassy officials availed today a call from the West German Foreign Office that would precede severance of diplomatic relations between the two nations.

Elizabeth II Starts Washington Whirl. Queen Elizabeth II starts her whirl in Washington today. The young British monarch was late without explanation to the White House.

Soviet Moon Station Due Soon, Red Says. Moscow, Oct. 18 (AP)—A Soviet mathematician today said that a satellite named Mira, which is to be launched by the Soviet Union, will be the first of a series of satellites to be launched by the Soviet Union.

Shakeup Seen In Leaders of United Textile. Washington, Oct. 18 (AP)—A shakeup in the leadership of the 170,000-member Textile Workers Union (UFW) was reported today in a move reported to avoid possible AFL-CIO action on corruption charges.

Look Northwest... Before 5:35 a.m. Cambridge, Mass., Oct. 18 (AP)—New Englanders interested in the satellite Mira, which is to be launched by the Soviet Union, should start looking about 5:35 a.m. on Thursday.

Kasper Jailed, Waits Prison To U.S. Prisons. Washington, Oct. 18 (AP)—Representative John Kasper was held in a federal prison to serve a one-year sentence for contempt of court. He was arrested after failing to appear in court for a hearing on charges of contempt of court.

Missiles Work New Contracts At \$183 Million. Washington, Oct. 18 (AP)—The Air Force today announced contracts totaling more than \$183 million for producing components of the Titan missile and the Titan II missile.

Bias Wrangle In Little Rock Still Unsolved. Little Rock, Ark., Oct. 18 (AP)—The federal-state conflict over racial integration at Central High School remains in a deadlock.

Woman Held For Theft of Nearly \$17,000. Hartford, Oct. 18 (AP)—The chief cashier at the Hartford Hospital was arrested shortly after noon today for the theft of nearly \$17,000 from the institution during the past three years.

News Digests Culled from AP Wires. Sen. Lyndon Johnson blames "lack of intelligence, unaided effort" for the failure to get up first satellite.

Gathering for 18,000 Todd to Sell Party Film; Refreshments Donated. New York, Oct. 18 (AP)—Todd party givers extraordinary, takes a boat ride today to attend a party at the Waldorf-Astoria Hotel.

U.S. SPACE BALLOON Trip. Two New balloons soared into the atmosphere in a sealed aluminum gondola today in a test of the balloons' ability to withstand high altitude in a fresh attempt to test man's reactions to high altitude in a fresh attempt to test man's reactions to high altitude.

FNK CABINET OUSTED. The cabinet of the FNK government was ousted today by a vote of no confidence in the assembly.

Macmillan Coming for Conference. By JOHN M. BRIGHTOWER. Washington, Oct. 18 (AP)—President Eisenhower is developing a far-reaching proposal to pool the scientific manpower and creative resources of the North Atlantic Alliance.

Bulletins from the AP Wires. U.S. SPACE BALLOON Trip. Two New balloons soared into the atmosphere in a sealed aluminum gondola today in a test of the balloons' ability to withstand high altitude in a fresh attempt to test man's reactions to high altitude.

FNK CABINET OUSTED. The cabinet of the FNK government was ousted today by a vote of no confidence in the assembly.

U.S. SPACE BALLOON Trip. Two New balloons soared into the atmosphere in a sealed aluminum gondola today in a test of the balloons' ability to withstand high altitude in a fresh attempt to test man's reactions to high altitude.

FNK CABINET OUSTED. The cabinet of the FNK government was ousted today by a vote of no confidence in the assembly.

U.S. SPACE BALLOON Trip. Two New balloons soared into the atmosphere in a sealed aluminum gondola today in a test of the balloons' ability to withstand high altitude in a fresh attempt to test man's reactions to high altitude.

FNK CABINET OUSTED. The cabinet of the FNK government was ousted today by a vote of no confidence in the assembly.